

DT301DTM - Device Type Manager

The screenshot shows the smar DT301DTM Device Type Manager software interface. At the top, it displays "DT300 Series" and "4 to 20 mA + Hart Density Transmitter" next to the smar logo. The interface is divided into two main sections. On the left is a tree view under "OnLine Parameterize" with categories: Blocks (Identification: Device, Materials; Configuration: Display, Concentration, Polinomio, Table; Calibration; General; Multidrop), OffLine Parameterize, Observe, and Diagnosis. On the right is a 3D model of the transmitter and a configuration table. The table has fields for Manufacturer (SMAR), Device Type (DT301), Device ID (333), Tag (TAG), Descriptor (16 CHARACTERS), and Message (32 CHARACTERS). At the bottom, there are navigation arrows and a "Write" button. A status bar at the very bottom shows "Connected".

Manufacturer	SMAR
Device Type	DT301
Device ID	333
Tag	TAG
Descriptor	16 CHARACTERS
Message	32 CHARACTERS



DT 3 0 1 D T M M E



Specifications and information are subject to change without notice.
Up-to-date address information is available on our website.

web: www.smar.com/contactus.asp

INTRODUCTION

DT301DTM is from the family of Smar's DTMs HART. With DT301DTM is possible to have access to many functionalities of DT301 transmitters:

- ✓ Transmitter Identification and Manufacturing Data.
- ✓ Pressure Trim.
- ✓ Current Trim.
- ✓ Temperature Trim.
- ✓ Concentration Calibration.
- ✓ Table.
- ✓ Polynomial.
- ✓ Equipment Configuration.
- ✓ Equipment Maintenance.

For further details about topics above, refer to the DT301 manual.

TABLE OF CONTENTS

DT301DTM	7
Pre - Requirements	7
Installation	7
Topology.....	7
Layout.....	8
Communication	8
Response Code.....	9
DT301DTM Functions	9

DT301DTM

Pre - Requirements

The user needs to be familiar with the use of frame application FDT (Field Device Tool).

Installation

To do the DT301DTM Installation and all Smar’s DTMs, run **setup.exe** from CD “**Smar Device Library**”. After ending the CD-ROM installation, get into DTMs catalog from frame application to update DTMs list.

The download of installation package of Smar’s DTMs can be done at <http://www.smar.com/support.asp>. The user has to do a login at site.

DT301DTM could be integrated in all frame applications in compliance with the version 1.2 of the FDT/DTM standard.

Topology

After DT301DTM is installed and included at DTMs frame application catalog, a DTMs topology must be mounted (representing the devices physical topology).

On top must be inserted the communication DTM (responsible for communication between the computer and the first element from physical topology). The DT301DTM is the last element of topology (represents the DT301).

In some cases, is necessary a DTM gateway type (responsible for communication protocol conversion). The DT301DTM could be used with Communication DTM and Gateway DTM from other manufacturers, if they comply with the FDT 1.2 standard.

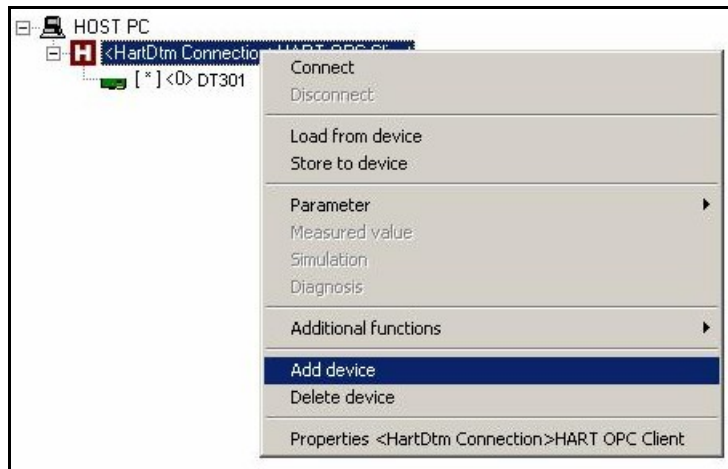


Figure 1 – “Add Device” Screen

Before changing DT301DTM to online, verify in the topology, if the address set in DT301DTM is the same of the DT301 device address. If it is not, change to the correct address through the communication DTM.

While the DT301DTM is offline (not connected), only the option **Offline Parameterize** will be enabled. After connected, will be possible to have online access to many functionalities of DT301:

- Online Parameterize
- Observe
- Diagnosis

Layout

The DTMs from Smar follow a standard layout. The parameters are distributed in many screens according to its functionality. The screens can be accessed by clicking the DTM options. Every time you click an option, all the screen parameters relative to the selected option will be read from the device.

Each DTM screen with parameters that can be written has a **Write** button. When any parameter is modified, the relative field will change its color. After writing, the DTM realizes the reading of the changed parameters and updates the screen.

In the figure below, the DT301DTM Online Parameterization navigation tree can be seen. The other options also appear.

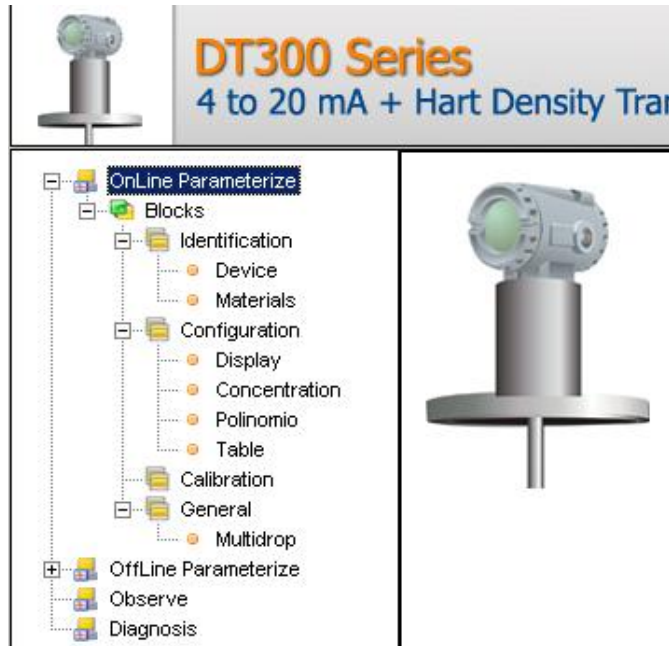



Figure 2 – DT301DTM navigation tree

In the window’s bottom part the user has access to navigation buttons . They allow go to home page, back to previous page or go to next page, respectively.

The communication status can be verified - connected or disconnected:



DT301 Version

In case DT301’s version is previous than version 2.12, possibly some parameter is not implemented and when attempting to write at this parameter, the following message will be displayed: “Command is not supported by the device”.

Communication

DT301DTM sends the #0 command at each 4 seconds and in case DT301 does not answer after 2 tries, the following message will appear: “Communication error detected. No response from device.” In this case, verify if any connection is broken or if the device is off.

Is not possible read / write any parameter in case the connected equipment is not DT301, not even the Universal Commands and Common Practice of HART protocol.

Response Code

When some writing or reading fail occurs, the DT301DTM displays a message coming from Response Code sent by DT301.

DT301DTM Functions

Below we have a brief description about each DT301DTM function.

1. **Online Parameterize** – This function is used to make the DT301 online parameterization, is enabled when the DT301DTM is online. The user access level for this function is “Operator” (read only) and “Maintenance” (complete access).

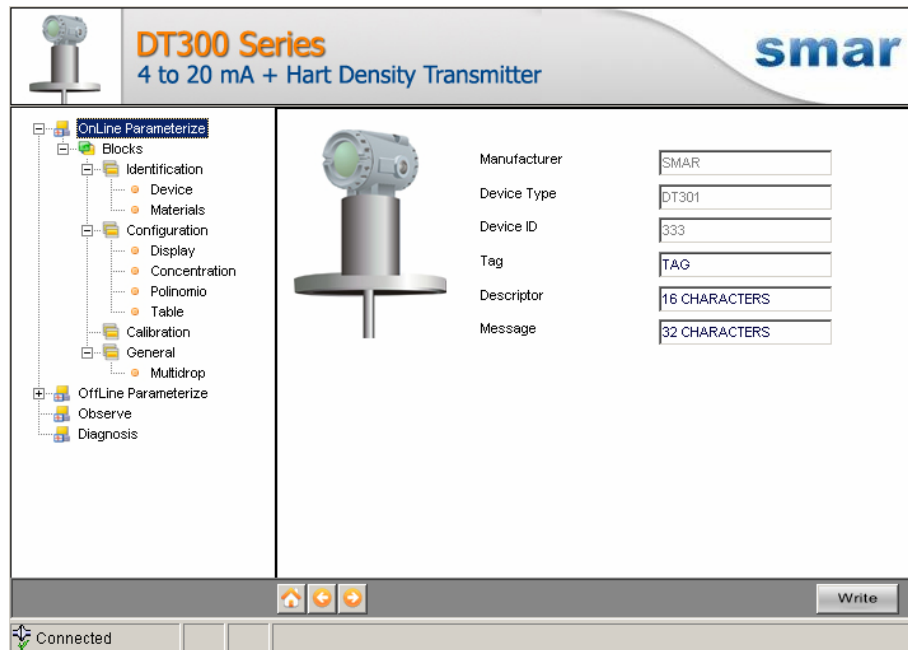


Figure 3 – DT301DTM “Online Parameterize” Screen

2. **Offline Parameterize** - This function is used to make the DT301 offline parameterization, the parameter values configured in this function can be written in DT301 through the **Download** function. The user access level for this function is “Maintenance”.

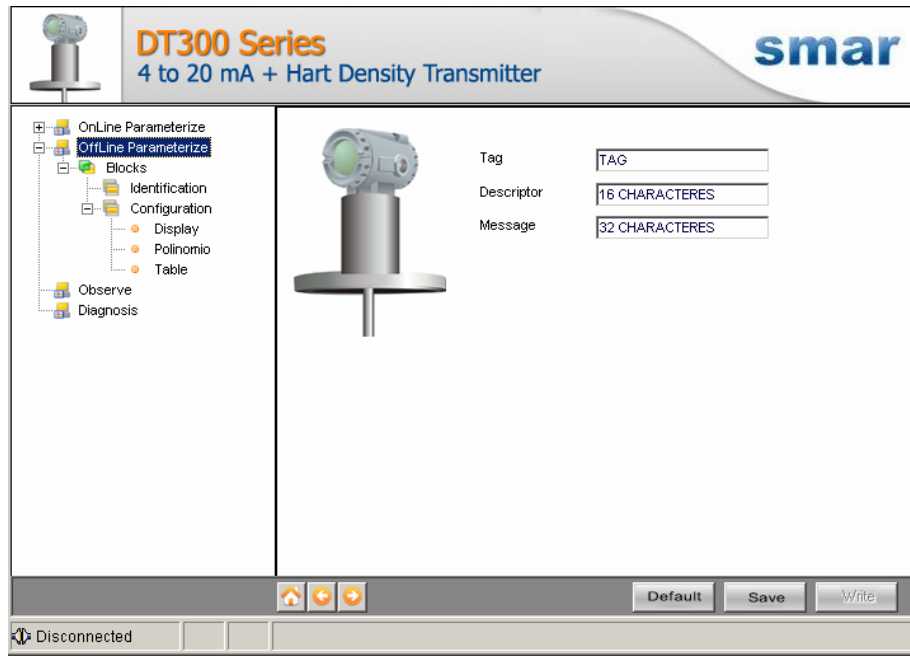


Figure 4 – DT301DTM “Offline Parameterize” Screen

3. **Observe** – Through this function is possible to monitor the DT301 process variables: Out (mA), Out (%), PV (%), Temp (°C).

The user chooses four variables to monitor. This function is enabled when the DT301DTM is online. The user access level for this function is “Operator”.

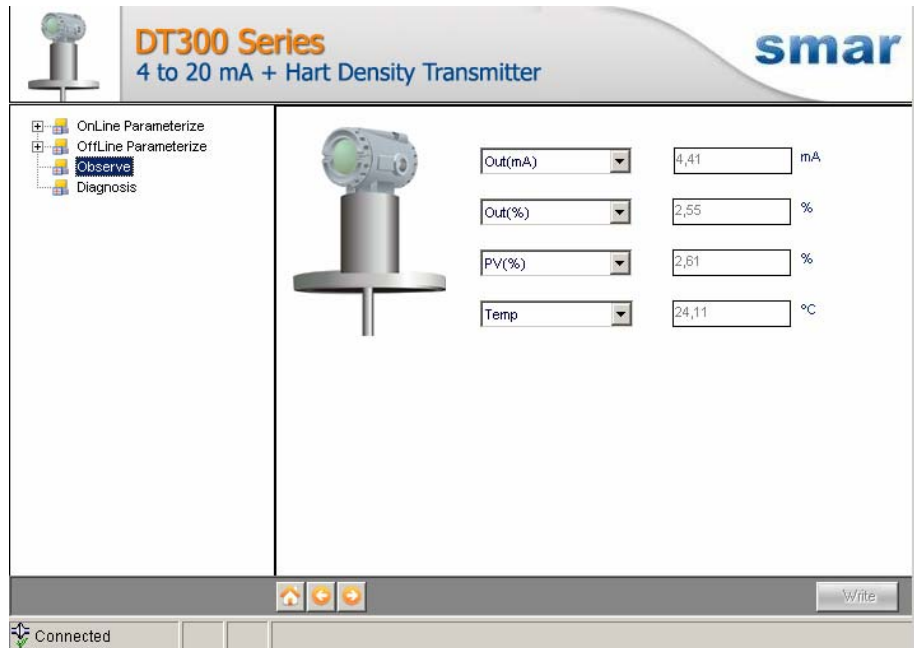


Figure 5 – DT301DTM “Observe” Screen

4. **Diagnosis** – Through this function the user has access to the DT301 diagnostic parameters. This function is enabled when the DT301DTM is online. The user access level for this function is “Operator”.

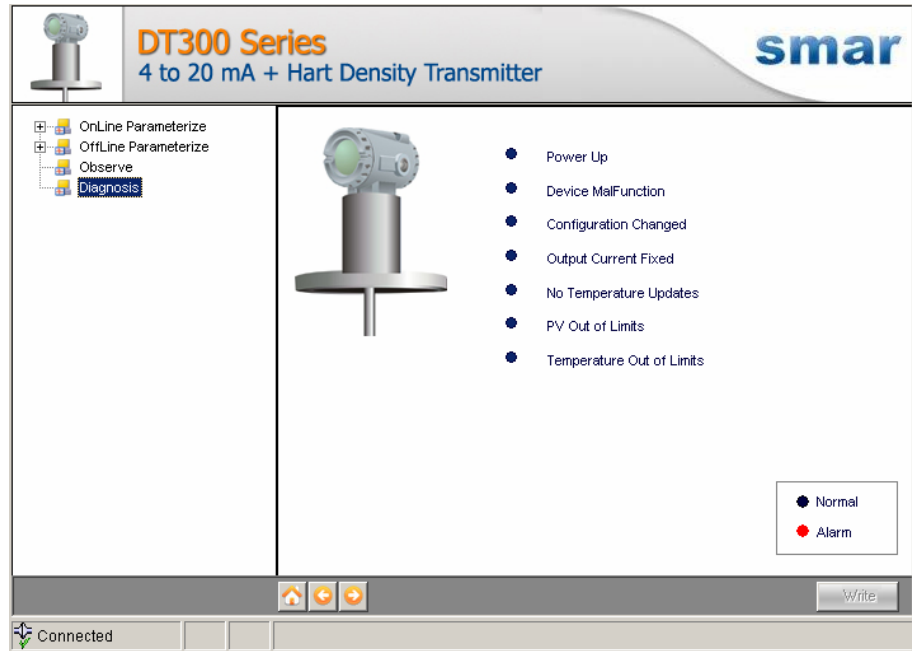


Figure 6 – DT301DTM “Diagnosis” Screen

5. **Upload** - This function reads the DT301 parameters and updates the DT301DTM database with the recent values. This function is enabled when the DT301DTM is online. The user access level for this function is “Maintenance”.
6. **Download** - This function writes the parameters configured in the DT301 **Offline Parameterize** function. This function is enabled when the DT301DTM is online. The user access level for this function is “Maintenance”.

