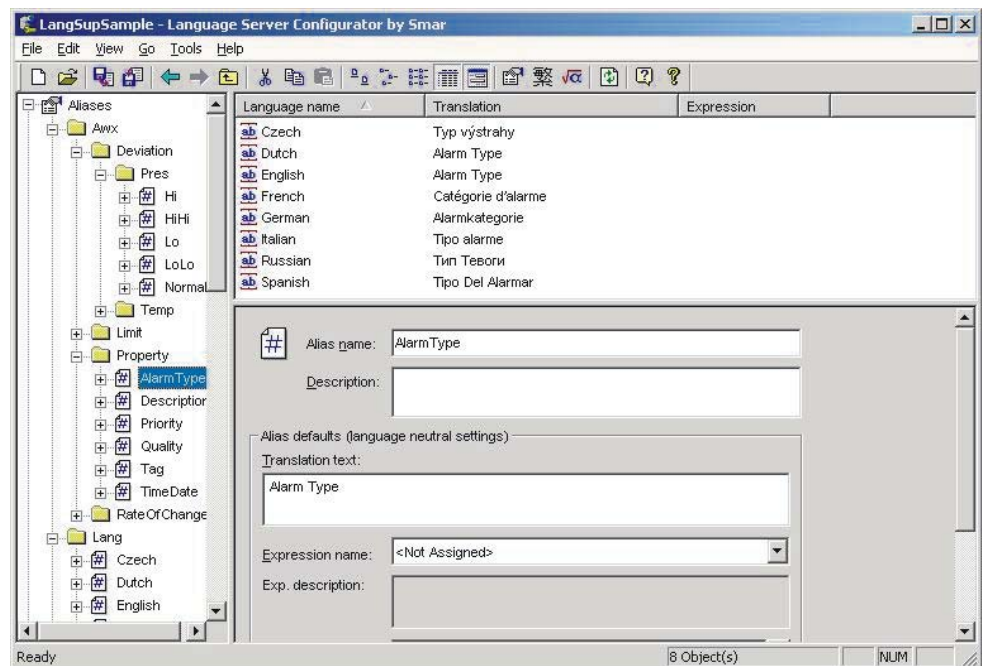


Language Switching





Specifications and information are subject to change without notice.
Up-to-date address information is available on our website.

web: www.smar.com/contactus.asp

Index

| | |
|---|----|
| INTRODUCTION TO LANGUAGE-ALIASING SUPPORT | 1 |
| SAMPLE LANGUAGE CONFIGURATION | 1 |
| SYSTEM REQUIREMENTS | 4 |
| STARTING THE SMAR LANGUAGE CONFIGURATOR | 4 |
| CREATING CONFIGURATION DATABASES | 4 |
| CREATING A MICROSOFT ACCESS CONFIGURATION DATABASE | 5 |
| CREATING A MICROSOFT SQL SERVER CONFIGURATION DATABASE | 7 |
| ADDING A CONFIGURATION DATABASE TO AN EXISTING SQL SERVER DATABASE | 10 |
| ALIASES LEVEL | 13 |
| LANGUAGES LEVEL | 14 |
| EXPRESSIONS LEVEL | 15 |
| ICONS | 16 |
| TOOLBARS | 17 |
| STANDARD TOOLBAR | 18 |
| DATA-MANIPULATION TOOLBAR | 18 |
| MENUS | 19 |
| FILE MENU | 19 |
| DATABASE CONNECTION PROPERTIES | 20 |
| EXPORTING CONFIGURATION DATA | 20 |
| IMPORTING CONFIGURATION DATA | 23 |
| ACTIVATING THE DATABASE | 26 |
| EDIT MENU | 26 |
| MULTIPLYING ITEMS | 27 |
| VIEW MENU | 28 |
| SELECTING LANGUAGES | 28 |
| SORTING ITEMS | 29 |
| GO MENU | 30 |
| TOOLS MENU | 31 |
| SETTING THE WORKING DIRECTORY | 31 |
| OPTIONS | 31 |
| GENERAL TAB | 31 |
| LANGUAGE SELECTOR SETTINGS TAB..... | 33 |
| SERVER SETTINGS TAB..... | 34 |
| COMPACTING AND REPAIRING MS ACCESS DATABASES | 34 |
| HELP MENU | 35 |
| BASIC STEPS FOR LANGUAGE CONFIGURATION | 35 |
| ADDING A NEW LANGUAGE | 35 |
| ADDING A NEW EXPRESSION | 36 |

| | |
|---|-----------|
| ADDING A NEW ALIAS..... | 38 |
| CONFIGURING A LANGUAGE TRANSLATION..... | 39 |
| TEXT TRANSLATION | 40 |
| EXPRESSION TRANSLATION | 40 |
| CREATING LANGUAGE SUBSETS..... | 41 |
| APPLYING A LANGUAGE SUBSET TO AN ALIAS | 42 |
| TEXT TRANSLATION | 43 |
| EXPRESSION TRANSLATION | 43 |
| USING THE LANGUAGE ALIAS BROWSER..... | 44 |
| LANGUAGE SERVER..... | 44 |
| OLE AUTOMATION OBJECTS AND INTERFACES..... | 44 |
| LANGSERVER OBJECT..... | 45 |
| SUMMARY OF PROPERTIES | 45 |
| SUMMARY OF METHODS | 45 |
| LANGSERVER PROPERTIES..... | 45 |
| LANGSERVER METHODS..... | 46 |
| LANGSERVERRECVARDESCRIPTOR OBJECT..... | 48 |
| SUMMARY OF PROPERTIES | 49 |
| LANGSERVERRECVARDESCRIPTOR PROPERTIES..... | 49 |
| TRANSLATIONTEXT | 49 |
| EXPRESSIONFORMAT | 49 |
| READEXPRESSION..... | 49 |
| WRITEEXPRESSION | 50 |
| FONTFACEName | 50 |

Language Switching

Introduction to Language-Aliasing Support

ProcessView includes language-aliasing support provided by the Language Configurator. The Unicode version of the ProcessView supports language aliasing with automatic range and value scaling, as well as unit conversions, formatting, and font selection.

Sample Language Configuration

The Unicode version of ProcessView installs a sample Language Server configuration under the "Languages" folder of the ProcessView product installation "tree." In addition, a sample display "languagesDemo.gdf," which includes a sample Viewer configuration, is provided under the "ProcViewDemo" folder. The figure below shows this sample during runtime mode. Notice that you can switch between languages in this display by simply clicking the buttons in the **Change Language** field.

Water Monitoring System

| Description | Value | Unit | Time | Date |
|-------------|-------|--------------|----------------|----------|
| Tank Level | 48.12 | inch | 4:43:20.734... | 5/3/2004 |
| Flow | 17.35 | cu.inches... | 4:43:19.734... | 5/3/2004 |

Change language

| | | | |
|---------|---------|---------|---------|
| Czech | Italian | Russian | Spanish |
| English | Dutch | French | German |

| TimeDate | Tag | Priority | Description | Alarm Type |
|------------------------|-------------|----------|------------------------|------------|
| 4:43:05 PM 5/3/2004 | Pressure | 500 | Very high pressure | Alarm |
| 4:43:21 PM 5/3/2004 | Pressure | 500 | Very high deviation | Alarm |
| 4:43:23 PM | Temperature | 500 | Rate of change too big | Alarm |

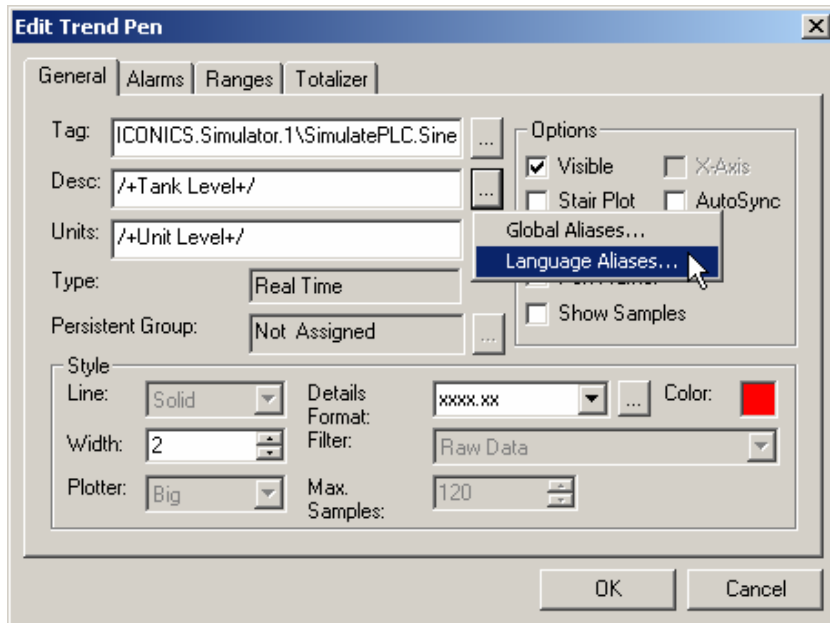
Language-Aliasing Demo in Runtime Mode

The figure below shows this same language-aliasing demo in configuration mode. This display incorporates ActiveX objects from GraphWorX, TrendWorX, and AlarmWorX.



Language-Aliasing Demo in Configuration Mode

For example, if you click on the "Water System" time plot trend in the language-aliasing configuration shown above, you can view the properties of the trend in the TrendWorX Viewer Active X. The **Edit Trend Pen** dialog box, shown below, displays the language-aliasing configuration of the "Tank Level" pen in the time plot trend for the water-monitoring system.

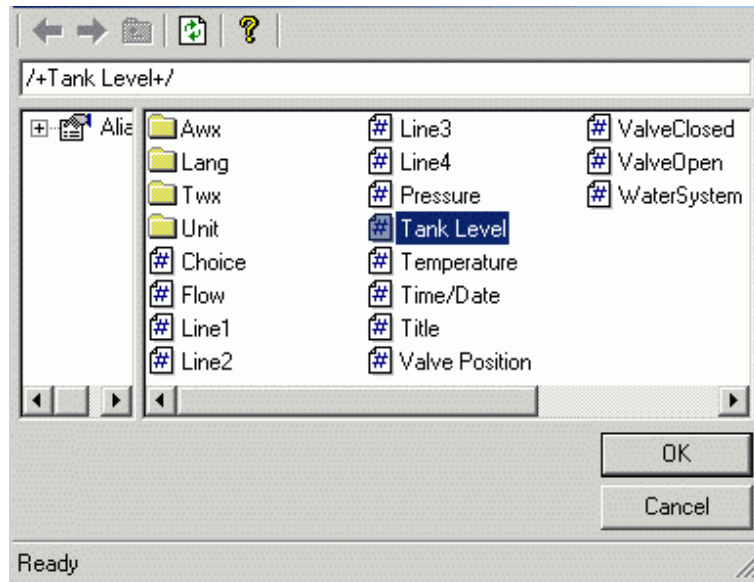


Language Aliasing Pen Configuration

When specifying a language alias, you can also select a language alias from the Language Alias Browser, which includes all language aliases in the language database. This eliminates the need to manually type in the alias name. Click the ... button and select **Language Aliases**, as shown in the figure above.

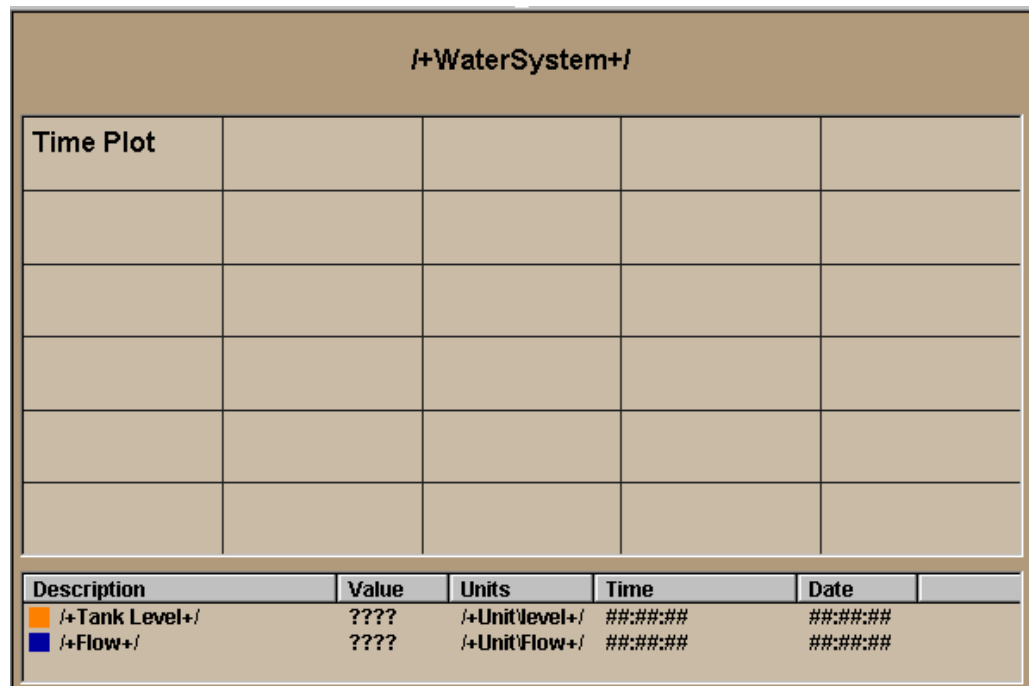
The **Language Alias Browser** opens, as shown in the figure below. The browser includes all languages aliases in the language database. All language aliases that are configured in the

Language Configurator are conveniently available to choose from inside the browser. The tree control of the Language Configurator is mimicked in the tree control of the Language Alias Browser. Select a language alias by double-clicking the alias name. The alias name appears at the top of the browser, which automatically adds the /+ and +/ delimiters to the alias name. Click the **OK** button.



Selecting an Alias From the Language Alias Browser

Delimiters. For the example above, the trend display appears as shown in the figure below. Note that the strings within a "/+" and "+/" delimiter pair define a language-aliased string. During animation (runtime) mode, the TrendWorX Viewer will interface to the Language Server, and it will try to resolve the language-aliased strings. If successful, it will display the translated strings in the trend screen. In addition, if the **Units** language alias string has an equation defined in the Language Configurator, it will autoscale the pen values based on the scaling equation supplied by the Language Server.



Language-Aliased Trend Display

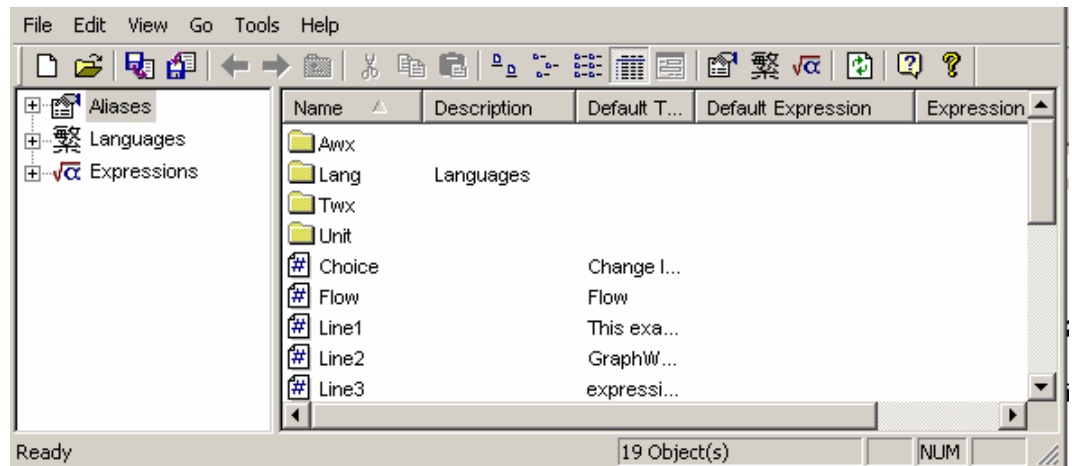
System Requirements

The Unicode version language aliasing is independent of the resource .dll selection, which relates mostly to the text in the dialog boxes and other user interface elements. The Unicode version of PROCESSVIEW is available only for Windows 2000, Windows XP, Windows NT, and .NET Server.

Starting the Smar Language Configurator

To start the Language Aliasing Configurator:

1. From the Windows **Start** menu, select **Programs > Smar ProcessView > Languages > Language Configurator**.
2. This opens the Language Aliasing Configurator, as shown in the figure below. The screen consists of a split window with a tree control view in the left-hand pane and a configuration view in the right-hand pane. The left-hand pane contains a "tree view" that lists the **Aliases**, **Languages**, and **Expressions** that are configured for language aliasing. Notice that the Language Configurator provides several aliases, languages, and expressions by default. These default settings are configured for the language-aliasing demo. The right-hand pane displays information about specific configurations and enables you to configure new language-aliasing settings. The Configurator provides a standard format for the configuration database, as well as a sample (default) Language Aliasing configuration project. The Configurator also includes a toolbar and menus with many command functions.

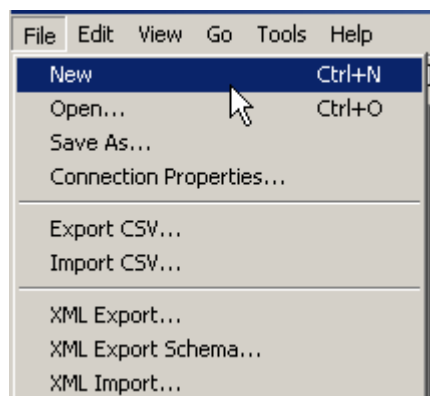


Language Configurator Screen

Creating Configuration Databases

The Configurator provides a Configuration Database Wizard for creating new Microsoft Access and SQL Server configuration databases. To create a new configuration database in the Configurator:

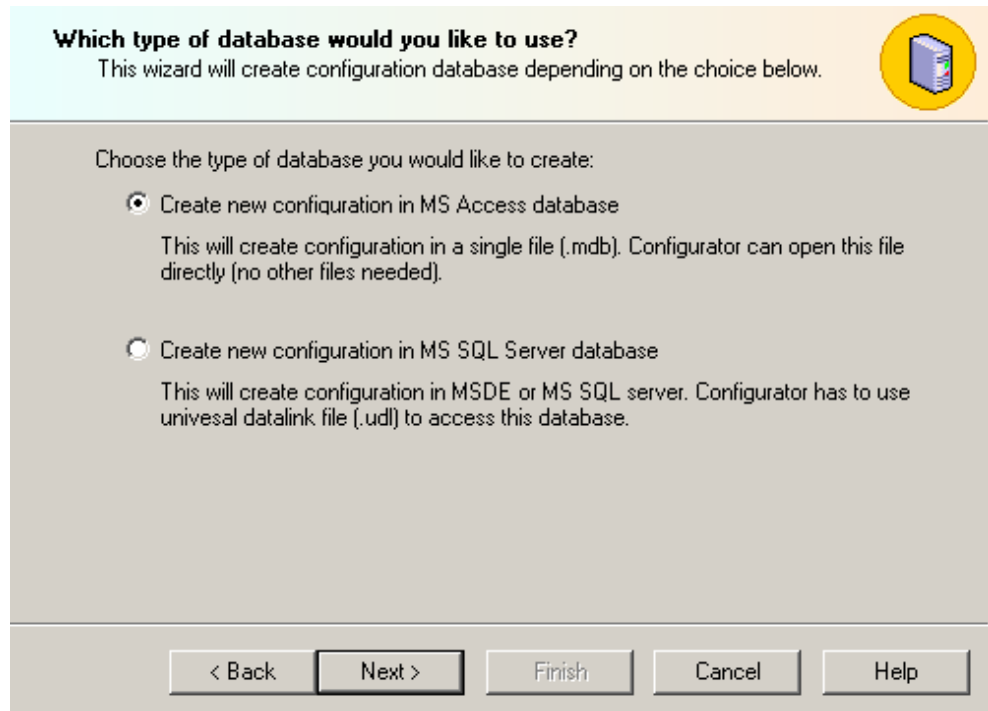
1. Select **New** from the **File** menu, as shown in the figure below.



Creating a Configuration Database

2. The introduction screen for the Configuration Database Wizard appears. Click the **Next** button to continue.
3. You have two options for creating your new database, as shown in the figure below:
 - **Create a new Microsoft Access configuration database:** For a Microsoft Access database, the Configurator uses a single .mdb file
 - **Create a Microsoft SQL Server database:** The Configurator uses Universal Data Link (.udl) files to connect to a Microsoft SQL Server or MSDE database.

Select the database type you want to create, and then click **Next**.

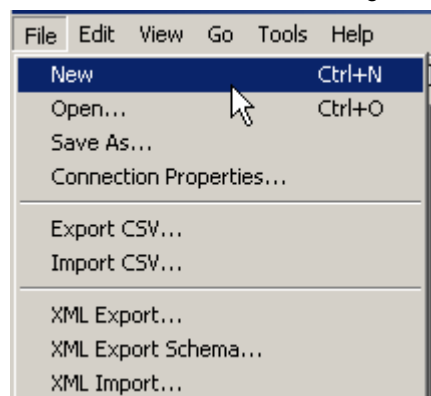


Choosing the Type of Database To Create

Creating a Microsoft Access Configuration Database

To create a new Microsoft Access configuration database in the Configurator:

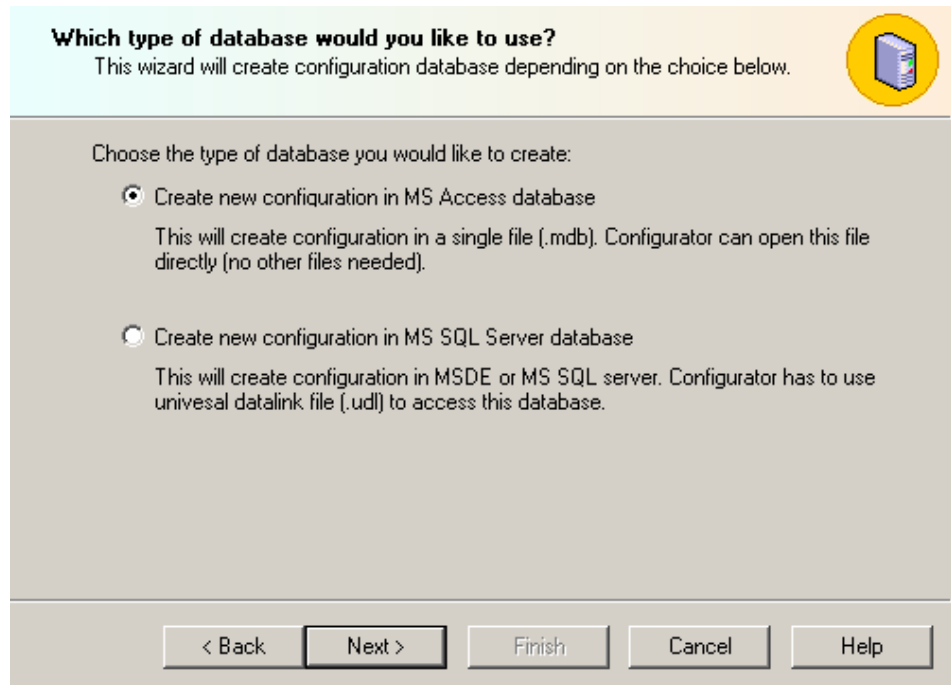
1. Select **New** from the **File** menu, as shown in the figure below.



Creating a Configuration Database

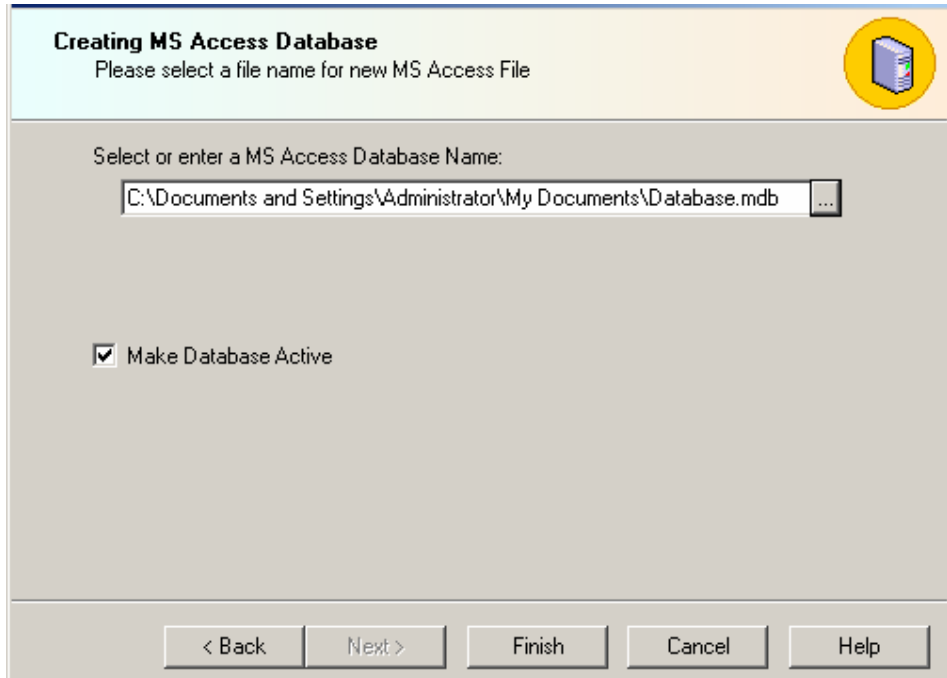
2. The introduction screen for the Configuration Database Wizard appears. Click the **Next** button to continue.

3. You have two options for creating your new database, as shown in the figure below. Select Create new configuration in MS Access database. Click the Next button to continue.



Creating a New Microsoft Access Database

4. Specify the directory path and file name for the new database, as shown in the figure below. Click the ... button to browse for a directory. If you want this new database to be the active configuration database, check **Make Database Active**.



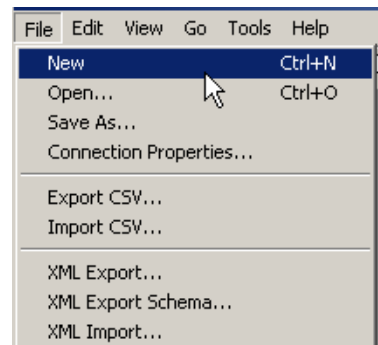
Naming the New Access Database

5. Click the **Finish** button. The new database is created and opened in the Configurator.

Creating a Microsoft SQL Server Configuration Database

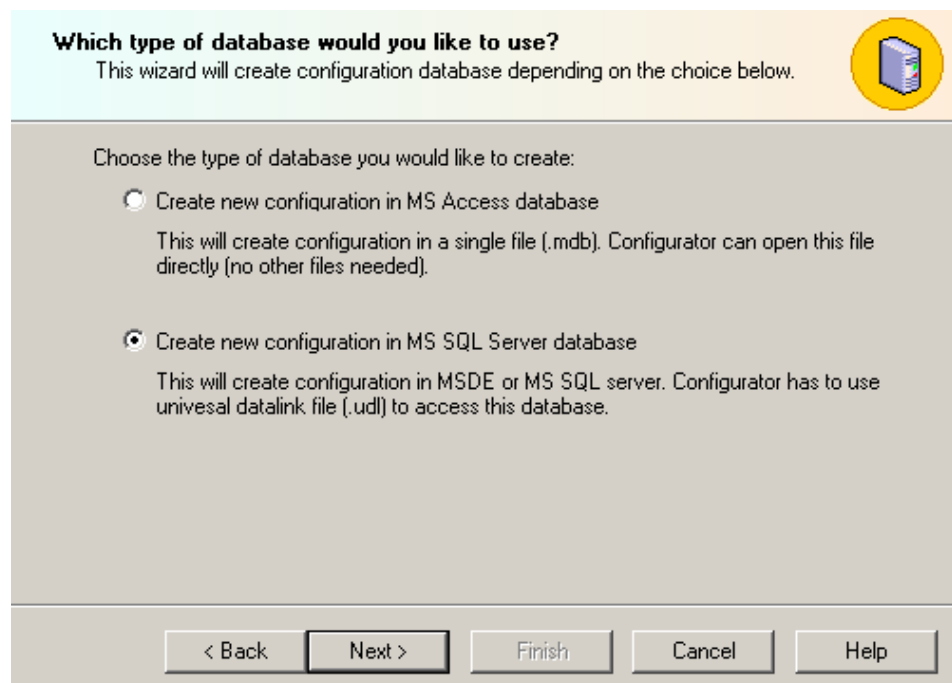
To create a new Microsoft SQL Server configuration database in the Configurator:

6. Select **New** from the **File** menu, as shown in the figure below.



Creating a Configuration Database

7. The introduction screen for the Configuration Database Wizard appears. Click the **Next** button to continue.
8. You have two options for creating your new database, as shown in the figure below. Select **Create new configuration in MS SQL Server database**. Click the **Next** button to continue.



Creating a New Microsoft SQL Server Database

9. To connect to a SQL Server database, either select an existing database from the **Database Name** drop-down list, or type a new name to create a new database, as shown in the figure below. If you choose to use an existing database, you have the option of adding (auto-appending) the configuration to the existing database. (For more information about the auto-append function, please see "Adding the Configuration to an Existing Database.")
10. In the **SQL Server Name** field, select the local SQL Server on which to create the database. If necessary, enter a user name and password to log on to the SQL Server. (It is recommended that you use Windows NT integrated security.)

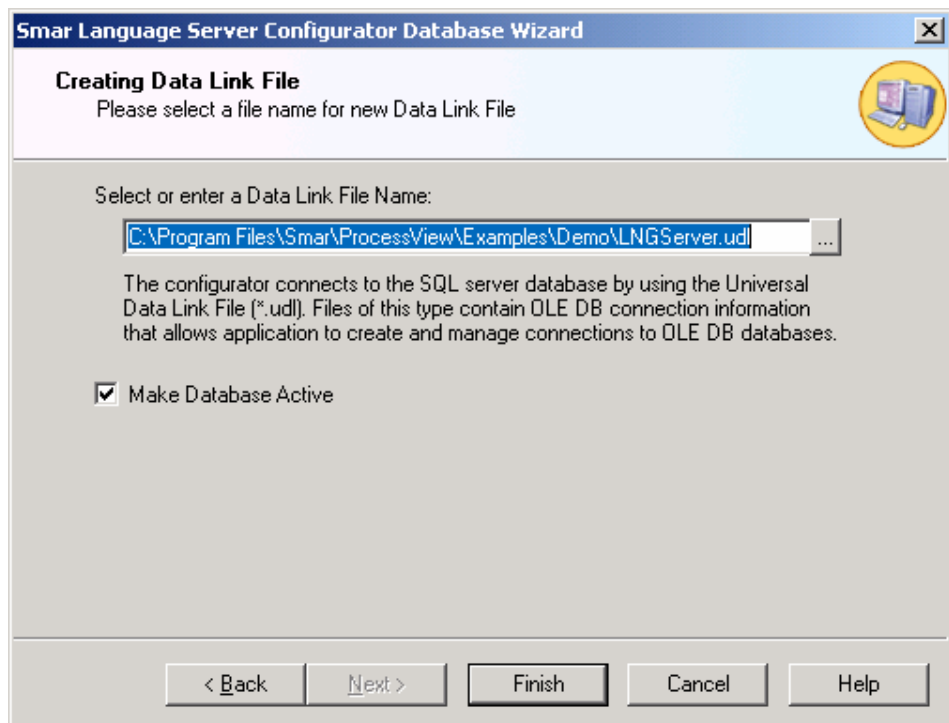
11. Note: Usually you have only one instance of SQL Server running on the local node. In this case, the drop-down list under **SQL Server Name** has only one option: "(local)." However, it is possible to run multiple SQL Server instances on the local node, in which case the **SQL Server** field lists all those SQL Server instances: "(local)" for the default instance and "node_name/instance_name" for all others. The drop-down list may show SQL Server instances on other nodes as well.

Connecting to a SQL Server Database

12. Specify a directory path location in which to create the database, as shown in the figure below. You can either use the default SQL Server database folder, or you can click the ... button and browse for a specific folder.

Specifying the Database Location and Properties

13. Under the **Database Properties** section, specify an initial size for the database, which should be as large as possible. You can also specify a **Database Growth** option (in megabytes) or as a percentage of the total size. MSDE servers are capable of growing the database on the fly to store more data. However, if this operation is performed frequently, the overall system performance may decrease. Choosing an initially large database size and a corresponding database growth option can drastically improve system performance.
14. Under the **Log File Properties** section, you can also modify the settings for the database transaction log file. Specify a **Log File Growth** option (in megabytes) or as a percentage of the total size. Again, a sufficient initial size setting can greatly improve performance. The default options should be adequate for most applications with a small to medium size load.
15. Click the **Next** button to create the new SQL Server database.
16. The Configurator uses Universal Data Link (.udl) files to connect to the Microsoft SQL Server database. These .udl files contain OLE database connection information that allows the Configurator to create and manage connections to OLE databases. Enter a name and directory path for the new .udl file in the **Data Link File Name** field, as shown in the figure below. You can browse for a directory by clicking the ... button to the right of this field. Click the **Next** button to continue. If you want this new database to be the active configuration database, check **Make Database Active**.



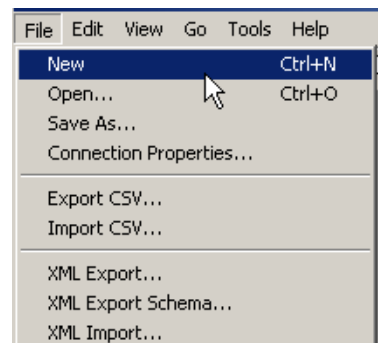
Creating a Universal Data Link File

17. Click the **Finish** button. The new database is created and opened in the Configurator.

Adding a Configuration Database to an Existing SQL Server Database

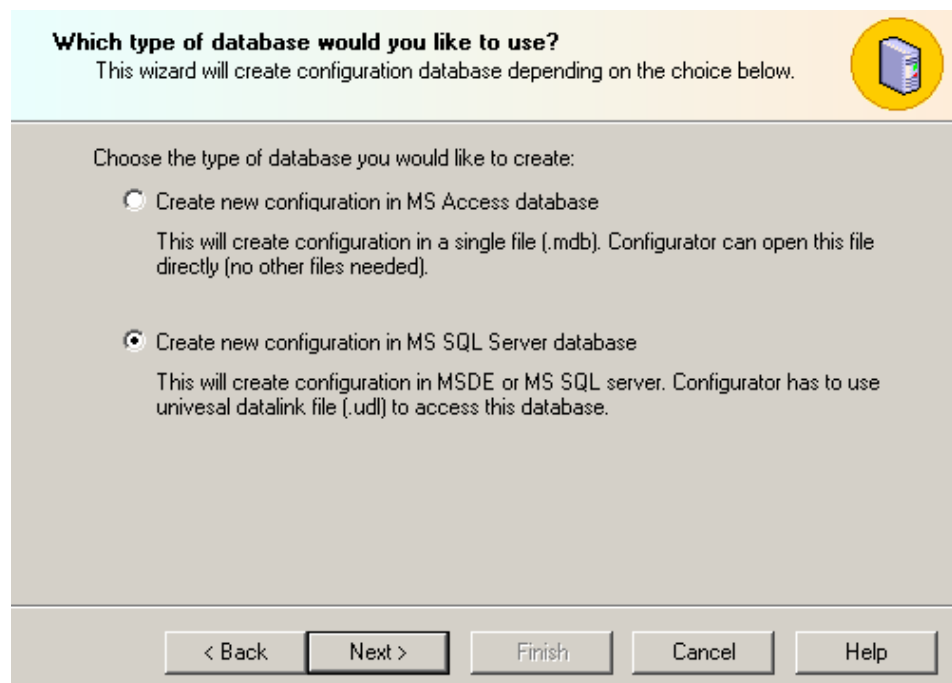
The Configuration Database Wizard also gives you the option to add the configuration database structure to an existing Microsoft SQL Server database:

1. Select **New** from the **File** menu, as shown in the figure below.



Creating a Configuration Database

2. The introduction screen for the Configuration Database Wizard appears. Click the **Next** button to continue.
3. You have two options for creating your new database, as shown in the figure below. Select **Create new configuration in MS SQL Server database**. Click the **Next** button to continue.



Creating a Microsoft SQL Server Database

4. To connect to a SQL Server database, select the existing database from the drop-down list, as shown in the figure below. Check the **Auto-append configuration into existing database** check box. In the **SQL Server** field, select the local SQL Server on which to create the database. Type a name for the database in the **Database Name** field. If necessary, enter a user name and password to log on to the SQL Server. (**Note:** It is recommended that you use Windows NT integrated security.) Click the **Next** button to continue.
5. **Note:** Usually you have only one instance of SQL Server running on the local node. In this case, the drop-down list under **SQL Server Name** has only one option: "(local)." However, it is possible to run multiple SQL Server instances on the local node, in which case the **SQL Server** field lists all those SQL Server instances: "(local)" for the default instance and "node_name/instance_name" for all others. The drop-down list may show SQL Server instances on other nodes as well.

SQL Server Database Connection
Please specify the following to connect SQL server

Select or enter a database name:

Auto-append configuration into existing database

Select or enter a server name:

Enter information to log on to the server:
 Use Windows NT integrated security (recommended)
 Use a specific user name and password:
 User name:
 Password: Blank Password

Connecting to an Existing SQL Server Database

6. If the existing database already has configuration tables, you have the following options, as shown in the figure below:

- **Select a different database name (recommended):** This option allows you to rename the database without affecting the existing database as well as create a new Data Link (.udl) file.
- **Use the existing database structure:** This option preserves the content of the existing database and allows you to create a new Universal Data Link (.udl) file.
- **Override all existing configuration tables:** This option expunges the content of the existing database and allows you to create a new Universal Data Link (.udl) file.

Note: Overriding the database may disable other applications that also use the database.

Click the **Next** button to continue.

One or more configuration tables already exist in chosen database
What would you like to do?

Select different database name (recommended)
This will provide you to specify different database name. Use this option when you are not sure what is the content of chosen database.

Use database structure as it is
This will not change anything in selected database. Use this option if you want to create a new datalink (.udl) file only.

Override all existing configuration tables
Caution: This may cause that other application will stop working. Use this option when you are absolutely sure that the database is not use by other applications.

Adding the Configuration to an Existing SQL Server Database

7. If you chose **Select a different database name (recommended)**, you are directed back to the SQL Server Database Connection dialog box, as shown in the figure below. Enter a new name for the database, and then click **Next**.

Renaming the Existing SQL Server Database

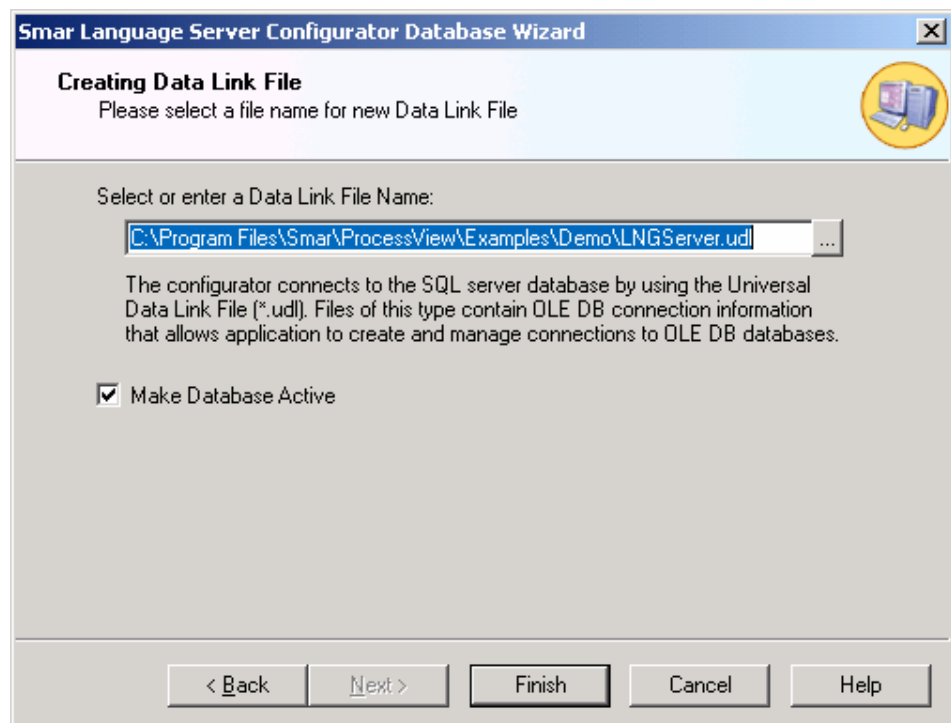
8. Specify a directory path location in which to create the database, as shown in the figure below. You can either use the default SQL Server database folder, or you can click the ... button and browse for a specific folder.

Specifying the Database Location and Properties

9. Under the **Database Properties** section, specify an initial size for the database, which should be as large as possible. You can also specify a **Database Growth** option (in megabytes) or as a percentage of the total size. MSDE servers are capable of growing the database on the fly to store

more data. However, if this operation is performed frequently, the overall system performance may decrease. Choosing an initially large database size and a corresponding database growth option can drastically improve system performance.

10. Under the **Log File Properties** section, you can also modify the settings for the database transaction log file. Specify a **Log File Growth** option (in megabytes) or as a percentage of the total size. Again, a sufficient initial size setting can greatly improve performance. The default options should be adequate for most applications with a small to medium size load.
11. Click the **Next** button to create the new SQL Server database.
12. The Configurator uses Universal Data Link (.udl) files to connect to the Microsoft SQL Server database. These .udl files contain OLE database connection information that allows the Configurator to create and manage connections to OLE databases. Enter a name and directory path for the new .udl file in the **Data Link File Name** field, as shown in the figure below. You can browse for a directory by clicking the ... button to the right of this field. Click the **Next** button to continue. If you want this new database to be the active configuration database, check **Make Database Active**.
13. **Note:** If you chose to **Use the existing database structure** or to **Override all existing configuration tables**, you will still need to create a new Data Link file.



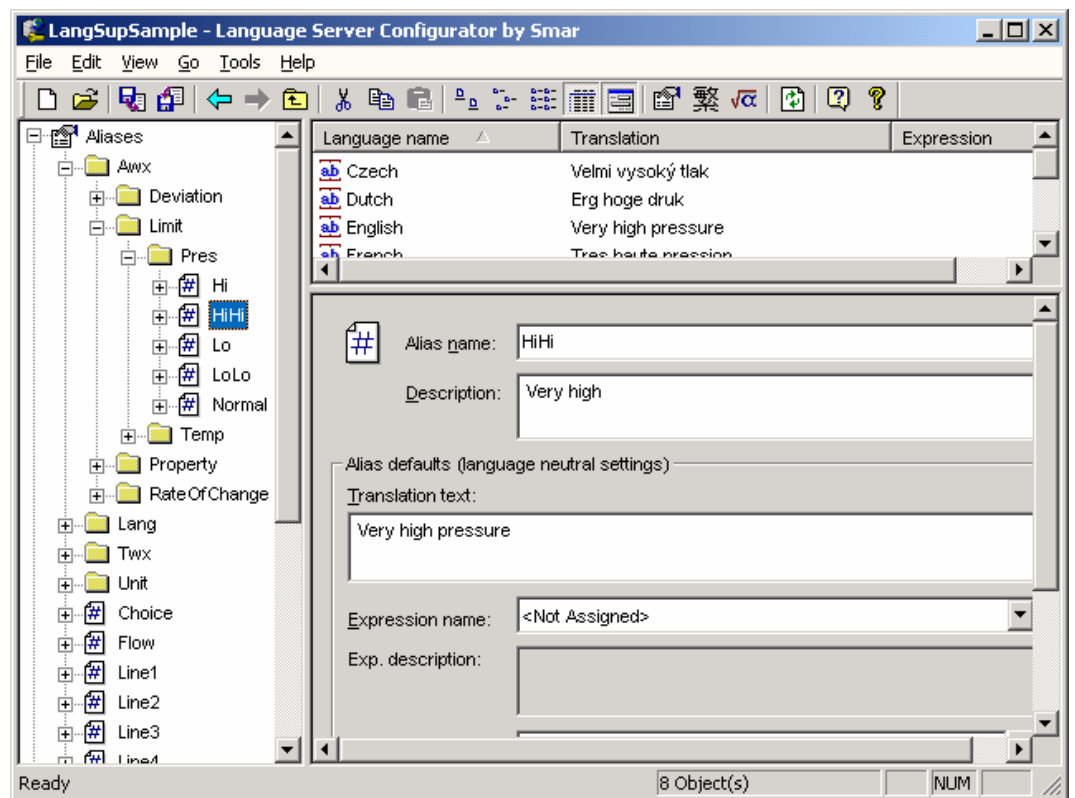
Creating a Universal Data Link File

14. Click the **Finish** button. The new database is created and opened in the Configurator.



Aliases Level

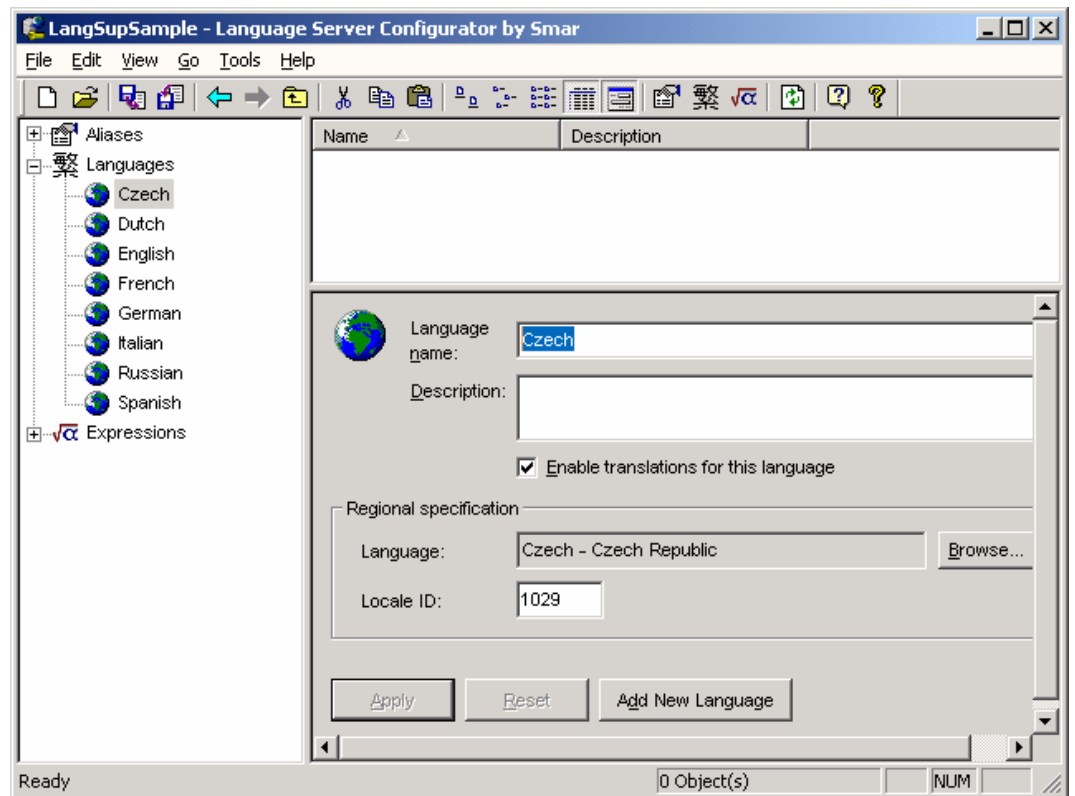
The **Aliases** level of the tree view contains various folders and aliases. The Language Configurator provides many aliases and folders by default. When you click on an alias, the properties of the alias are shown in the right-hand pane of the screen. For example, when you click the **HiHi** alias, as shown in the figure below, the alias name and description are displayed in right-hand pane. The translation text and the translation languages are also shown, as well as any expressions and formats associated with the alias. You can add a new alias to your configuration database for each item you wish to convert. For more information, see the **Adding a New Alias** section. For information on how to configure a language translation for each language under each alias you wish to convert see the **Configuring a Language Translation** section.

*Alias Properties*

Languages Level

The **Languages** level of the tree view shows all languages in the configuration database. The Language Configurator provides Czech, Dutch, English, French, German, Italian, Russian, and Spanish as default languages. When you click on a language, the language name and description are displayed in the right-hand pane, as shown in the figure below. You can include additional comments in the **Description** field. The **Enable translations for this language** check box is checked by default. If you prefer a regional language, you can search for a **Regional Specification** of a particular language by clicking the **Browse** button. The **Locale ID** that corresponds with the selected language is also displayed.

You can add a new language to your configuration database. For more information, see the **Adding a New Language** section. You can also add language subsets, which allow you to create an additional configuration to be used with a language. For more information about language subsets, see the **Creating Language Subsets** section.



Language Properties

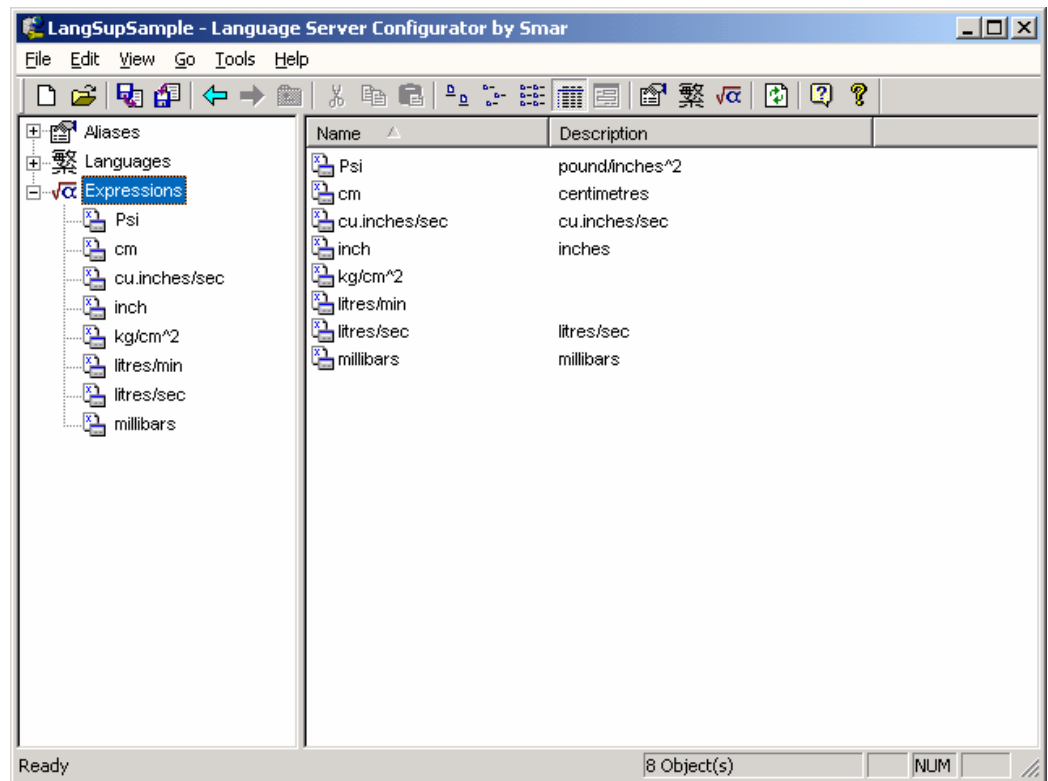


Expressions Level

The **Expressions** level of the tree view shows all expressions in the configuration database. The Language Configurator provides the following units as default expressions.

- Psi
- cm
- cu.inches/sec
- inch
- kg/cm²
- liters/min
- liters/sec
- millibars

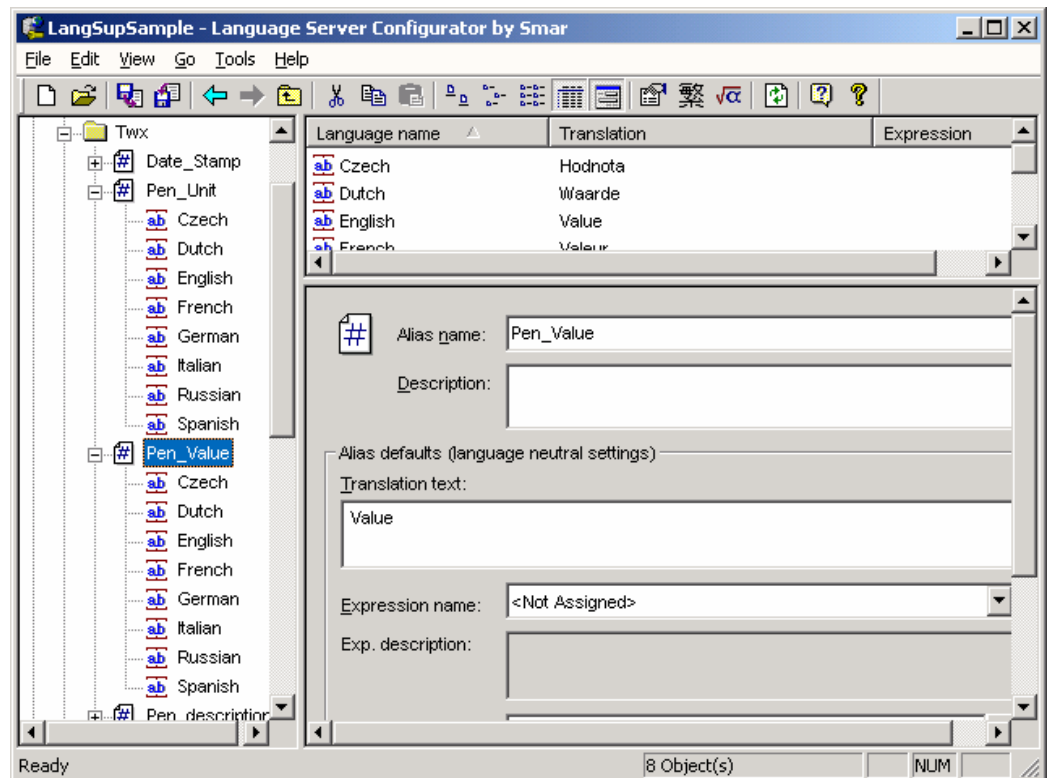
When you click on an expression, the expression name and description are displayed in the right-hand pane, as shown in the figure below. You can include additional comments in the **Description** field. The read and write expression parameters are also shown. You can modify the expression by clicking the **Exp** button, which opens the **Edit Expression** dialog box. You can also add new expressions to the configuration database. For more information, see the **Adding a New Expression** section.



Expression Properties

Icons

As you can see in the figure below, you will encounter various icons in the tree view of the Language Configurator screen.



Icons



When a language translation for an alias is properly defined, the alias is indicated by the blue "pound sign" icon shown at left.



The red "pound sign" icon shown at left indicates that all languages for an alias are translated but that the alias contains different kinds of translations. For example, one language might have an associated text translation, while another language might have an associated expression. However, the red "pound sign" icon can also indicate that something is wrong with one of the translations, so you should check the translations.



Translated languages for each alias are indicated by the icon shown at left.



Translated language subsets for each alias are indicated by the icon shown at left.



Translated languages that contain an expression are indicated by the icon shown at left.



Translated language subsets that contain an expression are indicated by the icon shown at left.



Translated languages that contain an expression but no text are indicated by the icon shown at left.



Translated language subsets that contain an expression but no text are indicated by the icon shown at left.



When a language translation is defined and the translation text is missing, or at least one of the languages is not translated, then the alias is indicated by the "red exclamation point" icon shown at left.



A language that is not properly translated is indicated by the "blue question mark" icon shown at left.



A language subset that is not properly translated is indicated by the "green question mark" icon shown at left.



In the Languages level of the tree, languages are indicated by the "globe" icon shown at left.



In the Languages level of the tree, language subsets are indicated by the icon shown at left.











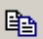




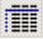







In the Expressions level of the tree, expressions are indicated by the icon shown at left.

Toolbars

The Language Configurator contains two toolbars that provide easy access to command functions. The **Standard** toolbar contains commands that enable you to modify the Language Configurator screen. The **Data-Manipulation** toolbar contains commands that affect language configuration.

Standard Toolbar










To display the **Standard** toolbar of the Language Configurator, shown below, select **Toolbars > Standard Buttons** from the **View** menu. The **Standard** toolbar of the Language Configurator, shown below, contains the following command buttons.

| | |
|---|--|
|  | New: Creates a new configuration database. |
|  | Open: Opens an existing configuration database. |
|  | Import Data: Imports configuration data from a text file (.txt) or a Microsoft Excel file (.csv). |
|  | Export Data: Exports configuration data to a text file (.txt) or a Microsoft Excel file (.csv). |
|  | Back: Moves the cursor back to the previously selected item in the tree control. |
|  | Next: Moves the cursor to the next item in the tree control. |
|  | Up One Level: Moves up one level in the tree control. |
|  | Cut: Deletes current selection, sending it to the clipboard. |
|  | Copy: Copies the current selection to the clipboard. |
|  | Paste: Pastes the current contents of the clipboard. |
|  | Large Icons: Displays items as large icons. |
|  | Small Icons: Displays items as small icons. |
|  | List: Displays items as a list. |
|  | Details: Displays items as a list with details. |
|  | Dialog view: Displays additional configuration options. |
|  | Aliases: Moves the cursor to the Aliases tree control. |
|  | Languages: Moves the cursor to the Languages tree control. |
|  | Expressions: Moves the cursor to the Expressions tree control. |
|  | Global Refresh: Refreshes the data for the entire Configurator screen. |
|  | About: Displays information about the application. |
|  | Help Topics: Launches online Help for the application. |

Most of the commands on the **Standard** toolbar are also available in the menus. For more information about the functions of these commands, refer to the **Menus** section.

Data-Manipulation Toolbar

To display the **Data-Manipulation** toolbar of the Language Configurator, shown below, select **Toolbars > Data Manipulation Buttons** from the **View** menu. The **Data-Manipulation** toolbar contains the following command buttons.

| | |
|---|--|
|  | New 'Regional Specification': Creates a new language item. |
|  | New 'Subset': Creates a new language subset item. |
|  | New 'Expression': Creates a new expression item. |
|  | New 'Folder': Creates a new folder. |
|  | New 'Alias': Creates a new alias. |
|  | New 'Translation (Languages)': Creates a new translation language for the selected alias. |
|  | New 'Translation (Language Subsets)': Creates a new translation language subset for the selected alias. |
|  | Multiply: Creates multiple copies of the selected item. |
|  | Delete: Deletes the selected item. |

Menus

The Language Configurator contains the following menus:

- **File menu**
- **Edit menu**
- **View menu**
- **Go menu**
- **Tools menu**
- **Help menu**

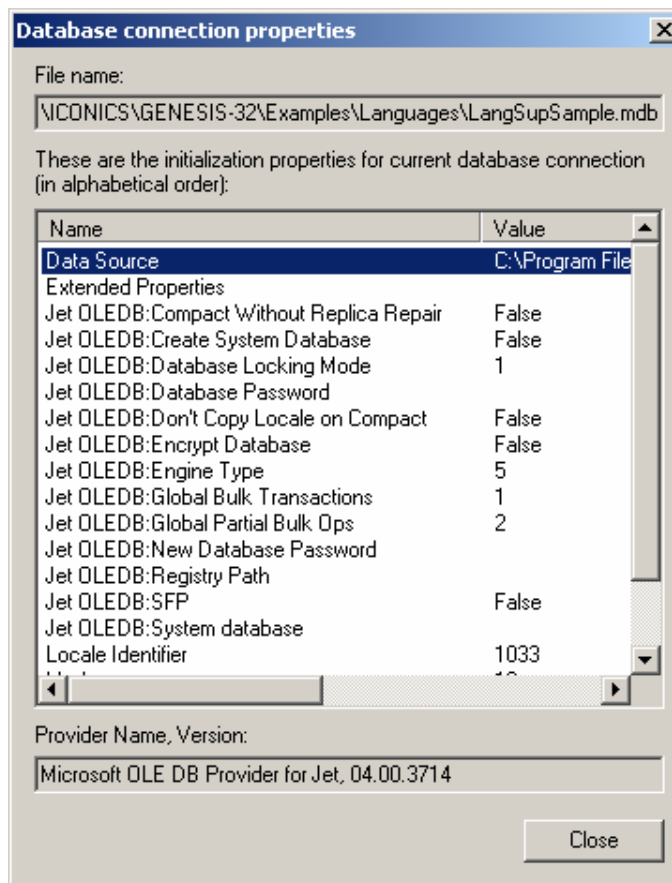
File Menu

The **File** menu contains the following commands:

| Command | Shortcut Keys | Function |
|-----------------------|----------------------|--|
| New | CTRL+N | Creates a new configuration database. |
| Open | CTRL+O | Opens a Microsoft Access (.mdb) or Microsoft Data Link (.udl) file, which allows you to connect to any OLE database source, such as a SQL database. |
| Save As | | Saves the current database under a different name as a Microsoft Access (.mdb) or Microsoft Data Link (.udl) file. |
| Connection Properties | | Displays the current database connection properties (see below). |
| Export Dictionary | | Exports aliases and translations from your database to a text file (.txt) or a Microsoft Access file (.mdb). You can specify the delimiters and what to export. |
| Import Dictionary | | Imports aliases and translations into your configuration database from a text file (.txt) or a Microsoft Access file (.mdb). You can then specify the delimiters and choose from the import settings. |
| Export Data | | Exports configuration data from your database to a text file (.txt) or a Microsoft Excel file (.csv). You can specify the delimiters and what to export. |
| Import Data | | Imports data into your configuration database from a text file (.txt) or a Microsoft Excel file (.csv). You can then specify the delimiters and choose from the import settings. |
| XML Export | | Exports configuration data to an XML file. |
| XML Export Schema | | Exports configuration data to an XML Schema file. |
| XML Import | | Imports configuration data from an XML file. |
| XML Validate | | This feature does not import an XML data file, but it will try to validate its structure using stored XML schema. Once it passes this validation, the XML file is acceptable for import by the Configurator. |
| Make Active | | Makes the current database active for use by the global aliasing engine. If this command is not available, then the current database is already the active database. |
| Exit | | Closes the applications. |

Database Connection Properties

Selecting **Connection Properties** from the **File** menu opens the **Database Connection Properties** dialog box, shown below, which lists the initialization properties for the current database connection.



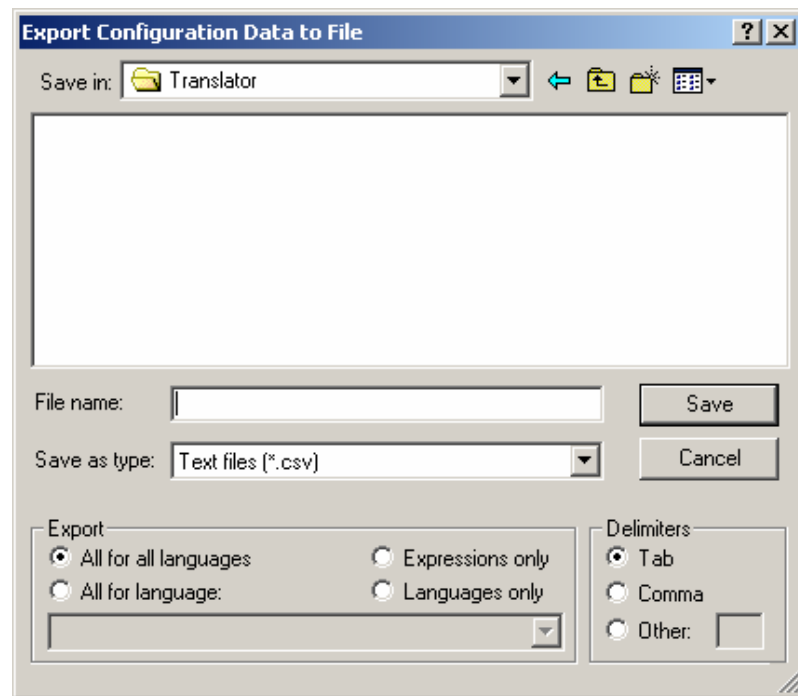
Database Connection Properties Dialog Box

Exporting Configuration Data

The Configurator offers the flexibility of exporting data from your configuration database to a text (.txt) file or a Microsoft Excel (.csv) file. To export data, select **Export Data** from the **File** menu. This opens the **Export Configuration Data to File** dialog box, shown below. You can then specify the delimiters and what to export:

- All for all languages
- All for language
- Expressions only
- Languages only

If you select **All for language**, the list of languages will become available at the bottom of the dialog box.



Export Configuration Data to File Dialog Box

Text file format. Choose the folder to which you want to export the data from your database. When Text files (*.csv) is selected in the **Save As Type** field. When you click **Save**, the data will be saved to a Unicode text file. Microsoft Excel is one of the many formats that enable you to edit the file. In the newly created file, the data are grouped into languages, expressions, and aliases. Unless you specify delimiters in the **Export Configuration Data to File** dialog box, the file will use **Tabs** as delimiters by default. Each group contains headings and columns that provide information about each item, such as descriptions and associated translations and expressions. It also provides the "tree" pathway for each item.

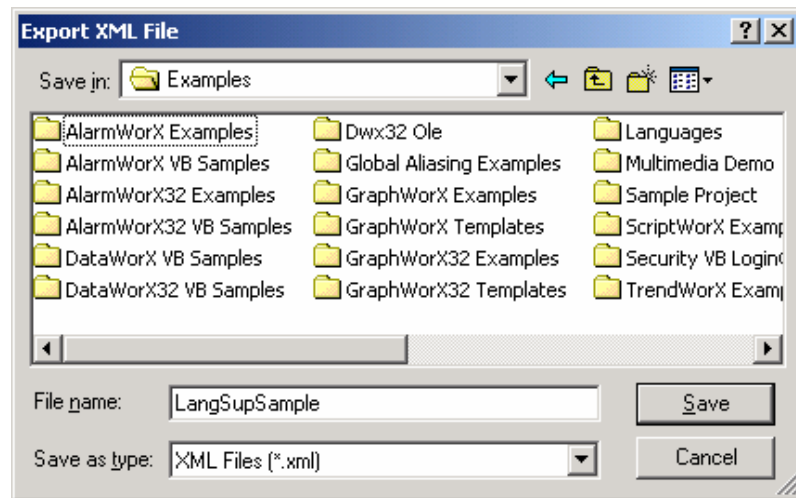
Exporting Data to an XML File

The Configurator also allows you to export data from your configuration database to an XML file. The XML export/import functionality was mainly developed for Windows platforms that do not support databases (e.g. Windows CE and Windows Embedded). XML has the following advantages over the CSV import/export function:

- XML has a standardized format, unlike the text/CSV format, which uses various delimiters (e.g. TAB instead of commas, strings could not accept all characters, etc.)
- XML is language-independent, whereas CSV converts date/time, floats, and currency fields according to local settings in Windows. For example, using CSV, you cannot export data on German Windows and import it on English windows without making changes
- Windows has an installed automation object that has the capability to work with XML. Thus, programmers can create/modify their configurations outside the Configurator using Visual Basic, if desired.
- XML supports schemas. A **schema** is a special XML file that specifies the data structure of an XML data file.

To export data, select **XML Export** from the **File** menu. This opens the **Export XML File** dialog box, as shown in the figure below. Give the file a name, and then choose the directory to which you want to export the data from your database. Click **Save**.

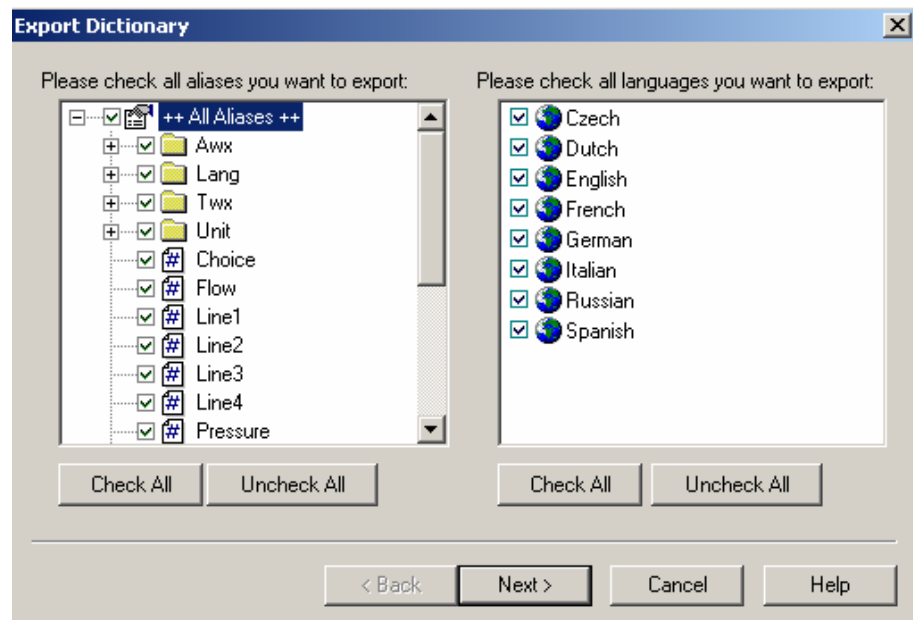
Note: You can also export configuration data to an XML Scheme file by selecting **XML Export** from the **File** menu.



Exporting Configuration Data to an XML File

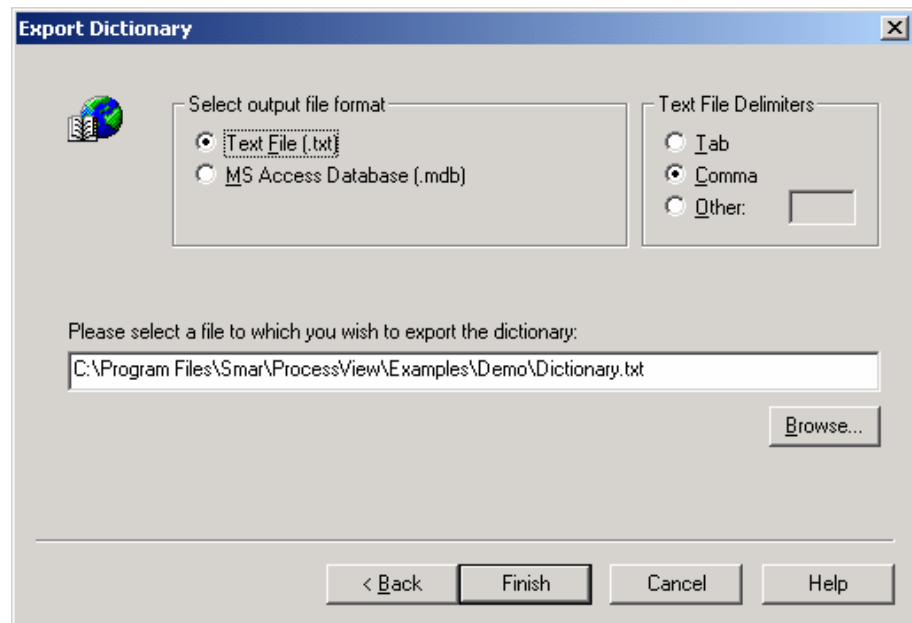
Exporting Aliases and Translations to a Dictionary File

The Configurator gives you the option of exporting aliases and their language translations from your configuration database to a text (.txt) file or a Microsoft Excel (.csv) file "dictionary." To export data to a dictionary, select **Export Dictionary** from the **File** menu. This opens the **Export Dictionary** dialog box, shown below. In the left pane, check the aliases that you want to include in the dictionary. In the right pane, select the language translations for the aliases. Click the **Next** button.



Choosing Aliases and Language Translations to Export

Select the output file format (text file or Microsoft Access file), and then click the **Browse** button to specify a file name for the new dictionary file. You can then specify the delimiters for export. Click **Finish** to generate the dictionary.



Choosing the File and Delimiters for Export

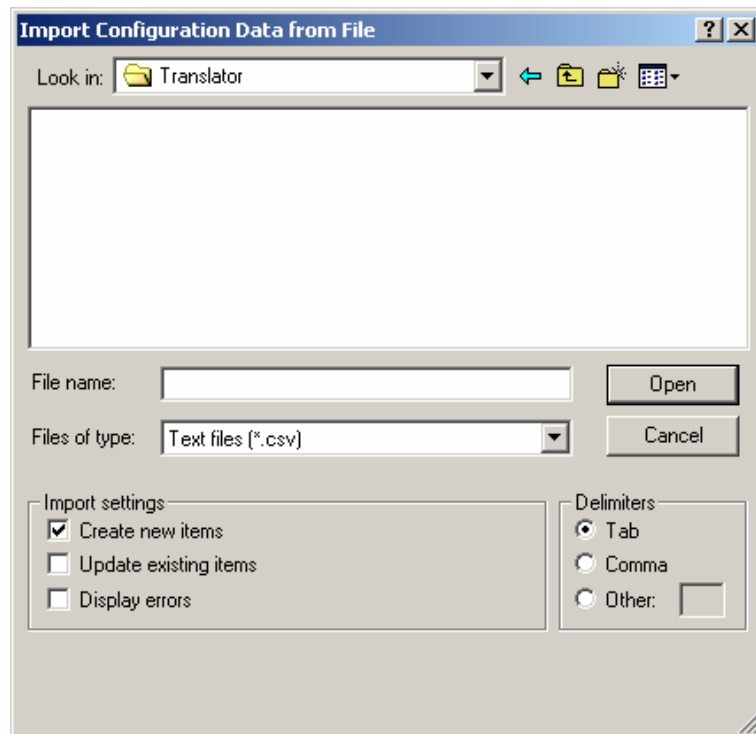
Importing Configuration Data

The Configurator offers the flexibility of importing data from a text (.txt) file or a Microsoft Excel (.csv) file to your configuration database. To import data, select **Import Data** from the **File** menu. This opens the **Import Configuration Data From File** dialog box, shown below. You can then specify the delimiters and choose from the following import settings:

- **Create new items.** When the import file contains items that are not yet in the configuration database, then it will create them. Otherwise it will skip these items.
- **Update existing items.** When the import file contains items that are in the configuration database, then it will update them using data from the import file. Otherwise it will skip these items.

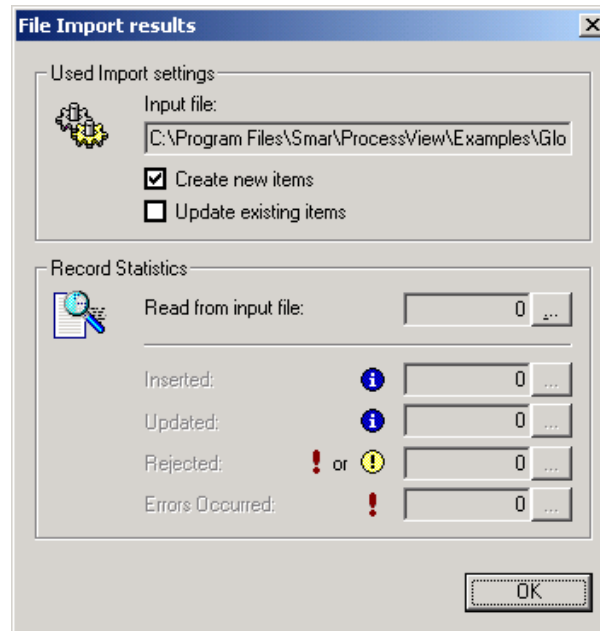
Note: Either **Create new items** or **Update existing items** must be selected. Otherwise there is nothing to import.

- **Display errors.** When this item is checked, the Configurator will show a dialog box if an error occurs, and then will ask you if you want to proceed with the import. When it is not checked, it will skip all items where an error occurred.



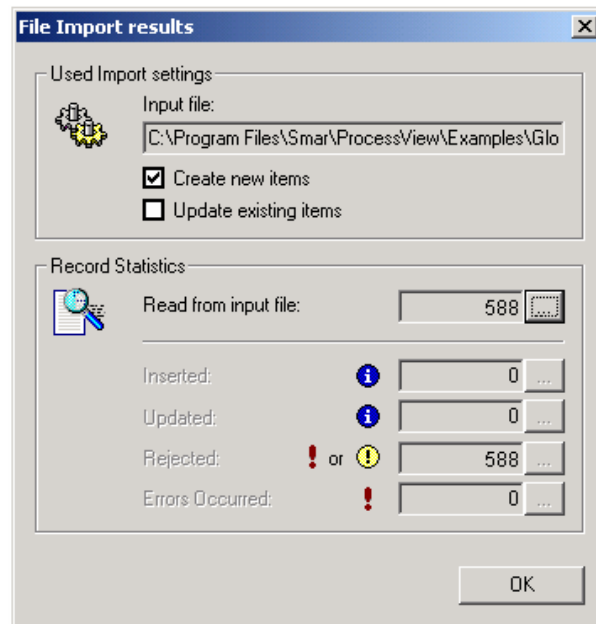
Import Configuration Data From File Dialog Box

When you have selected a file to import, click **Open**. When the import is completed, the **File Import Results** dialog box will open, as shown below. This shows the import settings, including the input file name. It also provides a summary of the import, including how many items were inserted, updated, or rejected, and shows how many errors occurred.



File Import Results Dialog Box

Click the ... button next to the right of each field to get the details view of the import results, as shown below. This view shows the specific items that were inserted, updated, or rejected, as well as a description of any errors that occurred.



File Import Results: Details View

Importing Aliases and Translations From a Dictionary File

The Configurator also gives you the option of importing aliases and their language translations from a text (.txt) file or a Microsoft Excel (.csv) file "dictionary" to your configuration database. To import data from a dictionary, select **Import Dictionary** from the **File** menu. This is similar to the **Import Data** function described above.

Importing Data From an XML File

The Configurator allows you to import data from your configuration database to an XML file. The XML export/import functionality was mainly developed for Windows platforms that do not support databases (e.g. Windows CE and Windows Embedded). XML has the following advantages over the CSV import/export function:

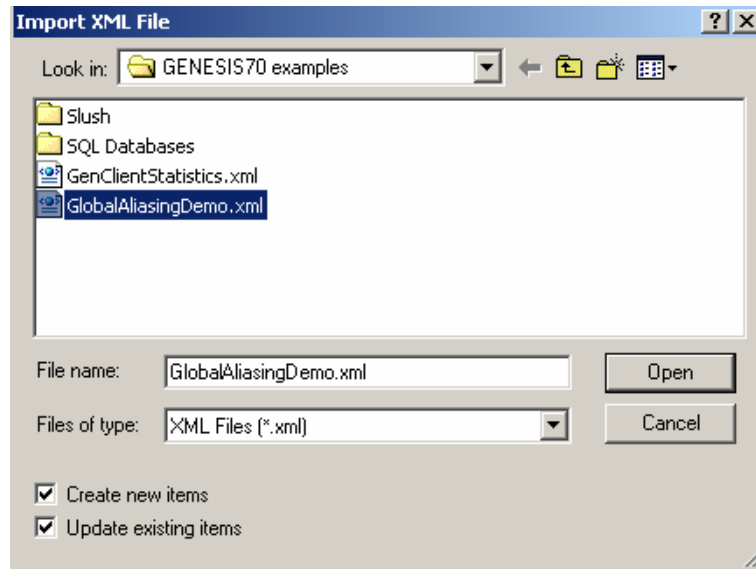
- XML has a standardized format, unlike the text/CSV format, which uses various delimiters (e.g. TAB instead of commas, strings could not accept all characters, etc.)
- XML is language-independent, whereas CSV converts date/time, floats, and currency fields according to local settings in Windows. For example, using CSV, you cannot export data on German Windows and import it on English windows without making changes
- Windows has an installed automation object that has the capability to work with XML. Thus, programmers can create/modify their configurations outside the Configurator using Visual Basic, if desired.
- XML supports schemas. A **schema** is a special XML file that specifies the data structure of an XML data file.

To import data, select **XML Import** from the **File** menu. This opens the **Import XML File** dialog box, as shown in the figure below. Give the file a name, and then choose the directory from which you want to import the data. You can then specify the delimiters and choose from the following import settings. Click **Open**.

- **Create new items.** When the import file contains items that are not yet in the configuration database, then it creates them. Otherwise it skips these items.
- **Update existing items.** When the import file contains items that are in the configuration database, then it updates them using data from the import file. Otherwise it skips these items.

Note: Either **Create new items** or **Update existing items** must be selected. Otherwise there is nothing to import.

Note: Selecting **XML Validate** from the **File** menu does not import an XML data file, but it will try to validate its structure using stored XML schema. Once it passes this validation, the XML file is acceptable for import by the Configurator.



Importing Configuration Data From an XML File

Activating the Database

Once your configuration is complete, you need to make sure that it is the active database. The database that is currently active is the one that the server uses. To make the current database active, select **Make Active...** from the **File** menu. If the **Make Active...** selection is grayed out, then the current database is already the active database.

A dialog box appears showing both the current active database and database that is currently being edited. To set the edited database as the active database, click the **Yes** button.

Edit Menu

The **Edit** menu contains the following commands:

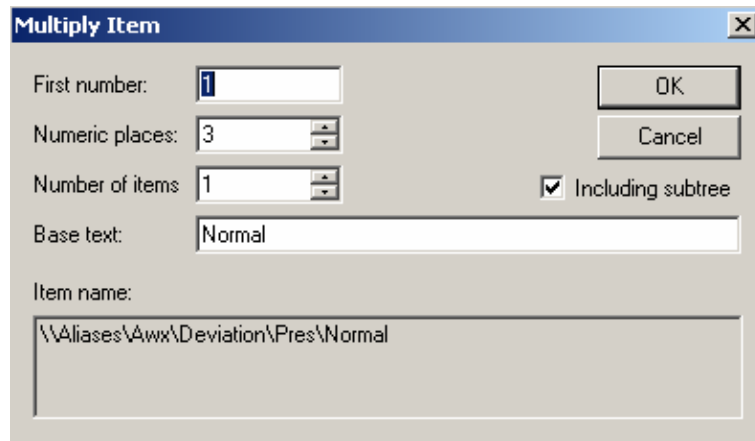
| Command | Shortcut Keys | Function |
|--------------------------------------|---------------|--|
| New - Folder | CTRL+F | In the Aliases level of the tree in the left-hand pane of the Configurator screen, this command creates a new alias folder. |
| New - Alias | CTRL+I | In the Aliases level of the tree in the left-hand pane of the Configurator screen, this command creates a new alias. |
| New - Translation (Languages) | CTRL+T | Creates a new translation language for the selected alias. |
| New - Translation (Language Subsets) | CTRL+W | Creates a new translation language subset for the selected alias. |
| New - Language | CTRL+L | Creates a new language item. |
| New - Subset | CTRL+U | Creates a new language subset item. |
| New - Expression | CTRL+E | Creates a new expression item. |
| Rename | CTRL+R | Renames the selected item. |
| Multiply | CTRL+M | Opens the Multiply Item dialog box (see below), which allows you to multiply an item in the tree control. |
| Delete | CTRL+DEL | Deletes the selected object. |
| Cut | CTRL+X | Cuts the selected object from the current view and places it on the clipboard. |
| Copy | CTRL+C | Copies the selected object to the clipboard. |
| Paste | CTRL+V | Pastes the last object placed on the clipboard. |
| Select All | CTRL+A | Selects all objects in a list. The selection is shown in the upper-right-hand section of the Viewer. |

| Command | Shortcut Keys | Function |
|------------------|---------------|--|
| Invert Selection | | Unselects all selected items and selects all unselected items in a list in the upper-right-hand section of the viewer. |

Multiplying Items

The Configurator allows you to multiply items in the tree control. Multiplication provides a simple way of developing configurations where there are many similar items in a given category. To multiply an item:

1. Select the item in the tree control that you wish to multiply.
2. Either right-click the item and select **Multiply** from the pop-up menu, or select **Multiply** from the **Edit** menu. This opens the **Multiply Item** dialog box, shown below.



Multiply Item Dialog Box

3. When the items are multiplied, they are all given a base name followed by a number. The default base text is the name of the item selected for multiplication. To modify the base text, change the **Base Text** field appropriately.
4. In the **First Number** field, specify the number to appear next to the first multiplied item.
5. In the **Number of Items** field, specify how many items you wish to create.
6. In the **Numeric Places** field, specify the minimum length of each number to append. Values that take up less space than the specified amount of numeric places will have zeros before the number.
7. If you want to multiply all subfolders as well, check the **Including Subtree** check box.
8. Click the **OK** button to do the multiplication. The example configuration shown in the **Multiply Item** dialog box above creates three new OPC Data folders with the following names:
 - Normal001
 - Normal002
 - Normal003

All subfolders will also be multiplied.

View Menu

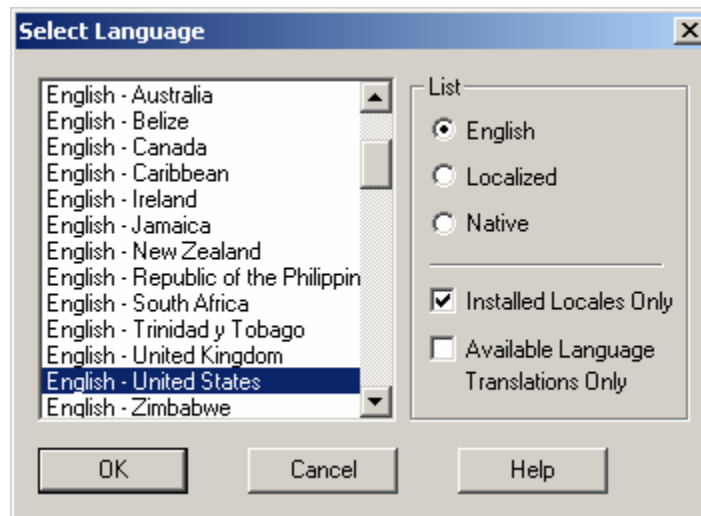
The **View** menu contains the following commands:

| Command | Shortcut Keys | Function |
|--------------------------------------|---------------|--|
| Toolbars - Standard Buttons | | Displays the Standard toolbar . |
| Toolbars - Data-Manipulation Buttons | | Displays the Data-Manipulation toolbar . |
| Status Bar | | Toggles the status bar. |
| Large Icons | F7 | Displays items as large icons. |
| Small Icons | F8 | Displays items as small icons. |
| List | F9 | Displays items as a list. |
| Details | F10 | Displays items as a list along with detailed information about the configuration of each item. |
| Dialog View | F11 | Toggles the configuration window (right-hand pane). |
| Sort By | | Displays a list of options for sorting the columns in the right-hand pane of the screen. The options listed depend on the level within the view. |
| Show/Hide Columns | | Displays a list of options that you can choose to show or hide in the view. |
| Select Language | | Opens the Select Language dialog box (see below). Choose the language you wish to use for your system (Unicode version only) and click OK . For navigation purposes, use the buttons and check boxes in the List section. |
| Global Refresh | F5 | Refreshes the data for the entire Configurator screen. |
| Subtree Refresh | CTRL+F5 | Refreshes only the data contained in the currently selected subtree. |

Selecting Languages

The **Select Language** function on the **View** menu allows you to choose which language to use in your display. Choosing **Select Language** from the **View** menu opens the **Select Language** dialog box, shown in the figure below.

Note: A language resource .dll is required for language switching.



Select Language Dialog Box

Define the parameters listed in the table below. Then click **OK** to return to the work area.

Select Language Parameters

| Parameter | Description |
|--------------------------------------|--|
| List | Lists available languages. Depending on which item you have selected, the view on the left will change. If English is checked, the languages will appear as their English name. If Localized is checked, the languages will appear with the native country in parentheses (for languages with several dialects only). When Native is checked, the languages are displayed the way they would be written in that language. |
| Installed Locales Only | If this is checked, local languages appear in the box. |
| Available Language Translations Only | Checking this box allows you to choose from available language translations only. |

Sorting Items

The **Sort By** and **Show/Hide Columns** commands in the **View** menu are specific to each type of item available and allow you to change how each item and its attributes are displayed.

For **Aliases**, the following options are available:

Sort by:

- Name
- Description
- Default Translation
- Default Expression
- Expression Format

Show/hide columns:

- Description
- Default Translation
- Default Expression
- Expression Format

For a **specific alias**, the following options are available:

Sort by:

- Language Name
- Translation
- Expression
- Format
- Font Name

Show/hide columns:

- Translation
- Expression
- Format
- Font Name

For **Languages**, the following options are available:

Sort by:

- Name
- Description
- LCID
- Language Name
- Activated

Show/hide columns:

- Description
- LCID
- Language Name
- Activated

For a **specific language**, the following options are available:

Sort by:

- Name
- Description

Show/hide columns:

- Description

For **Expressions**, the following options are available:

Sort by:

- Name
- Description
- Read Expression
- Write Expression

Show/hide columns:

- Description
- Read Expression
- Write Expression

Go Menu

The **Go** menu contains the following commands:

| Command | Shortcut Keys | Function |
|-------------------------------|----------------------|--|
| Back | CTRL+ALT+Left Arrow | Moves the cursor back to the previously selected item in the tree control. |
| Forward | CTRL+ALT+Right Arrow | Moves the cursor forward to the previously selected item in the tree control. |
| Up One Level | | Moves the cursor up one level in the tree control. |
| Next Item | ALT+Down Arrow | Moves the cursor to the next item down in the tree control. |
| Previous Item | ALT+Up Arrow | Moves the cursor to the next item up in the tree view. |
| Expand Item | ALT+Left Arrow | Expands an item that contains a submenu. |
| Collapse Item | ALT+Right Arrow | Collapses an item that contains a submenu. |
| Page Up | ALT+PgUp | Moves the cursor up to the first item in the tree. |
| Page Down | ALT+PgDown | Moves the cursor down to the last visible item in the tree. |
| Home | ALT+Home | Moves the cursor up to the first item in the tree. |
| End | ALT+End | Moves the cursor down to the last visible item in the tree. |
| Previous Language Translation | CTRL+Up Arrow | When a translation is selected and the previous alias is available in the current level, this function moves the cursor to the translation of the same language under the previous language alias. |
| Next Language Translation | CTRL+Down Arrow | When a translation is selected and the next alias is available in the current level, this function moves the cursor to the translation of the same language under the next language alias. |
| Aliases | F2 | Moves the cursor to the Aliases item in the tree. |
| Languages | F3 | Moves the cursor to the Languages item in the tree. |
| Expressions | F4 | Moves the cursor to the Expressions item in the tree. |
| Next Pane | F6 | Moves the cursor to the next pane. |
| Previous Pane | SHIFT+F6 | Moves the cursor to the last pane used. |

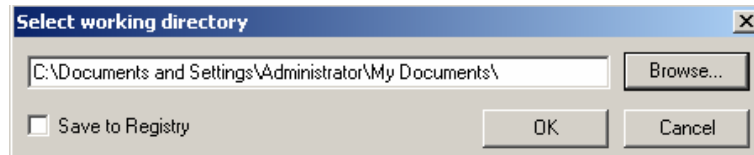
Tools Menu

The **Tools** menu contains the following commands:

| Command | Function |
|-----------------------------------|--|
| Set Working Directory | Sets a working directory for all files relating to the saved configuration. |
| Options | Launches the Options dialog box, which is described below in detail. |
| Compact/Repair MS Access Database | Opens the Compact/Repair MS Access Database dialog box, which is described below in detail. |

Setting the Working Directory

Selecting **Set Working Directory** from the **Tools** menu opens the **Set Working Directory** dialog box, shown below, which enables you to configure a custom directory in which all application configuration files will be stored and retrieved. Click **Browse** to select the directory.



Set Working Directory Dialog Box

Options

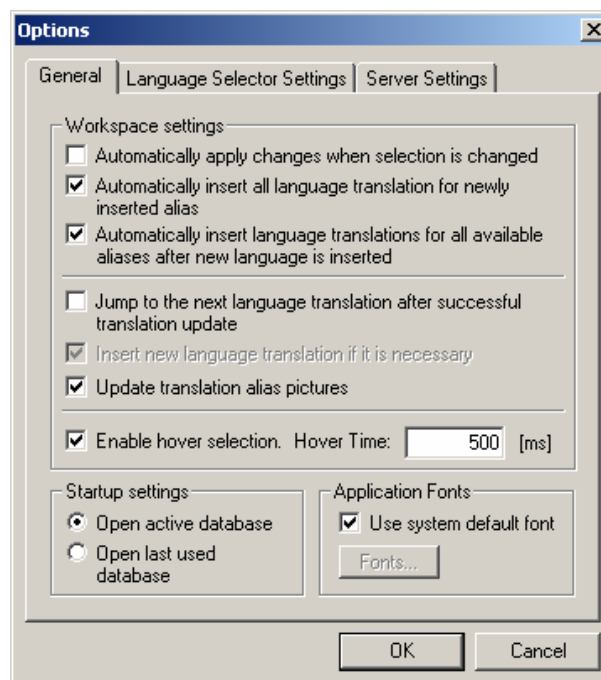
Selecting **Options** from the **Tools** menu opens the **Options** dialog box, which contains the following tabs:

- General
- Language selector settings
- Server settings

General Tab

The **General** tab of the **Options** dialog box, shown below, contains the following fields:

- Workspace settings
- Startup settings
- Application fonts



Options Dialog Box: General Tab

Workspace settings. This field contains the following options:

- **Automatically apply changes when selection is changed:** This allows changes to be saved each time you switch between dialog boxes. When this option is checked, you need not click the **Apply** button, nor will you be shown a message asking if you would like to apply changes.
- **Automatically insert all language translations for newly inserted alias:** This adds all language translations when creating a new alias. You will still need to add any language subset translations manually.
- **Automatically insert language translations for all available aliases after new language is inserted:** After you create a new language, it will automatically be added to all aliases.
- **Jump to the next language translation after successful translation update:** This automatically opens the configuration dialog box for the next language translation when configuration for the current language translation is finished.
- **Insert new language translation if it is necessary:** This will take effect when **Automatically insert language translations....** is checked. It inserts new translation record under the next alias (if it missing).
- **Update translation alias pictures (icons):** Each alias can have more than one icon associated with it. These icons are updated according to translation states. For example, when a language translation is defined and the translation text is missing, or at least one of the languages is not translated, then the alias icon is red exclamation point (!). Because this alias icon update feature tests all the translation items for every alias to get the status, it can slow down browsing in the Configurator. Thus, this option allows you to switch off these updates. When this option is unchecked, each alias is indicated only by the blue pound sign.
- **Enable hover selection:** This allows you to highlight an item by moving the mouse pointer over that item and keeping it there for a specified amount of time (in milliseconds).

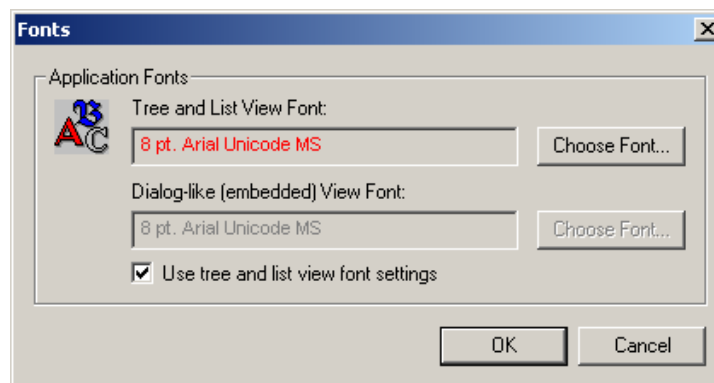
Startup settings. This field contains the following options:

- **Open active database:** This opens the database that is currently active when starting the Language Configurator.
- **Open last-used database:** This opens the last database that was opened when starting the Language Configurator.

Application fonts. This field contains the following options:

- **Use system default font:** When this option is checked, the system default font is used. To select a different font, uncheck this box to enable the **Fonts** button.
- **Fonts button:** This button allows you to choose an application font other than the system default font. When you click **Fonts**, the fonts dialog box opens, as shown below. If the font name is red, the font either has not been installed or has been improperly installed and therefore cannot be used. By clicking **Choose Font**, you can select different fonts (or font sizes) for the tree and list views as well as dialog boxes.

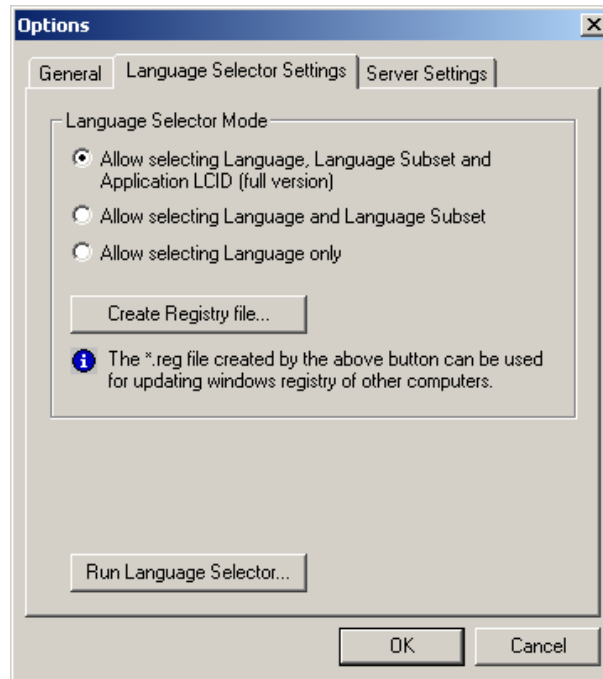
Note: To enhance language-aliasing performance, select the Microsoft Arial Unicode font, which contains all Unicode characters. When you begin configuring in GraphWorX, you should first select **Application Preferences** from the **Format** menu in GraphWorX. Click the **Font** button in the **Grid** tab of the **Application Preferences** dialog box and select the Arial Unicode MS font. The same applies to all ActiveX components, such as TrendWorX and AlarmWorX. The Arial Unicode MS font must be selected separately within the Properties dialog boxes of each ActiveX component.



Fonts Dialog Box

Language Selector Settings Tab

The **Language Selector Settings** tab of the **Options** dialog box, shown below, allows you to set the **Language Selector** mode.



Options Dialog Box: Language Selector Settings Tab

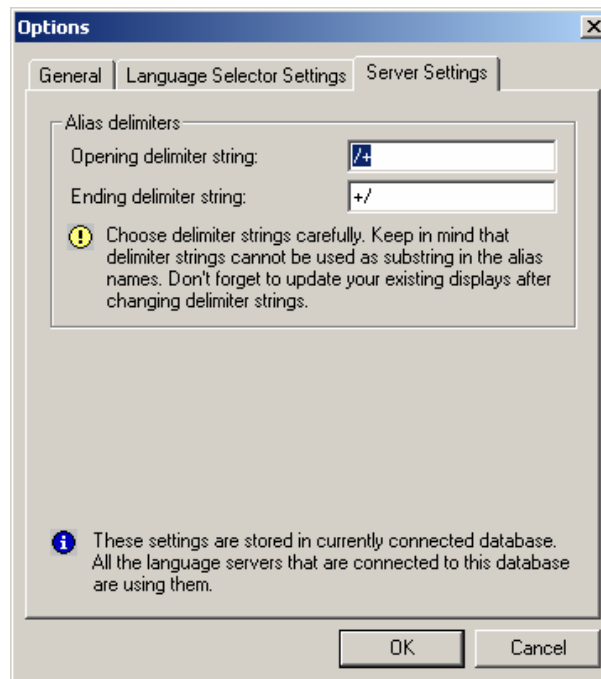
The **Language Selector Mode** field contains the following options for the **Language Selector** dialog box.

- **Allow selecting Language, Language Subset, and Application LCID:** Enables all fields in the Language Selector dialog box.
- **Allow selecting Language and Language Subset:** Enables only the **Language** and **Language Subset** fields in the **Language Selector** dialog box.
- **Allow selecting Language:** Enables only the **Language** field in the Language Selector dialog box.
- **Create Registry File:** Clicking this button enables you create to create a .reg file according to the current selector mode, which can be used in updating the Windows registry of other computers.

Once you have selected the mode, you can open the **Language Selector** dialog box by clicking **Run Language Selector**.

Server Settings Tab

The **Server Settings** tab of the **Options** dialog box, shown below, contains options for alias delimiters, which are the symbols that used to mark your display configuration as an alias.



Options Dialog Box: Server Settings Tab

Opening delimiter string: Enter the character(s) you wish to use as the opening delimiter.

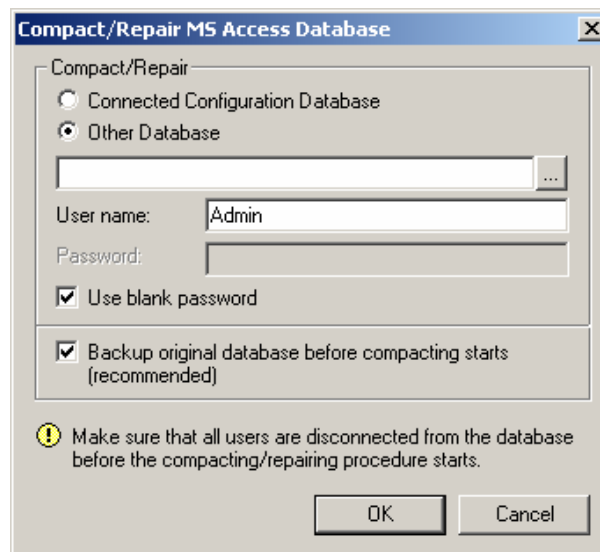
Ending delimiter string: Enter the character(s) you wish to use as the ending delimiter.

Note: Choose delimiter strings carefully because delimiter strings cannot be used as substrings in the alias names. Do not forget to update your existing displays after changing delimiter strings.

Compacting and Repairing MS Access Databases

You can compact Microsoft Access databases, which can be either configuration databases or historical databases, using the **Compact/Repair MS Access Database** dialog box, shown in the figure below. To open this dialog box, select **Compact/Repair MS Access Database** from the **Tools** menu. Microsoft Access-based databases are subject to database fragmentation over time, and the support for the database will compact the target database, reclaim unused space, and drastically improve database performance.

Note: It is critical that no users or client applications are connected to the database at the time of compacting and that, if the **Backup Original Database** option is selected, there is plenty of available hard disk space.



Compact/Repair MS Access Database Dialog Box

Help Menu

The **Help** menu contains the following commands:

| Command | Shortcut Key | Function |
|-------------------|--------------|--|
| Help Topics | F1 | Launches the online Help for the Configurator. |
| About Application | | Launches the SMAR About Box , which contains information about the product version number, copyright, and available disk space. It also contains information about how to contact SMAR. |

Basic Steps for Language Configuration

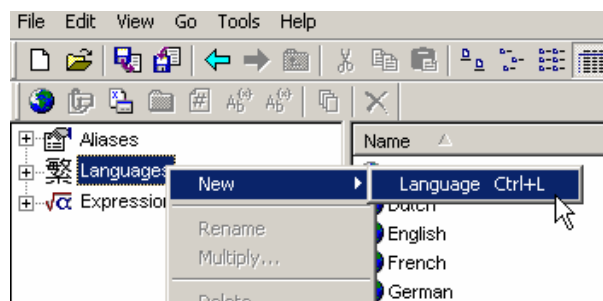
The following procedure describes the basic steps for creating a language database.

1. Add all languages you would like to use.
2. Add any expressions you would like to use.
3. Create aliases for all text and expressions you would like to convert.
4. Make the current database active.

Adding a New Language

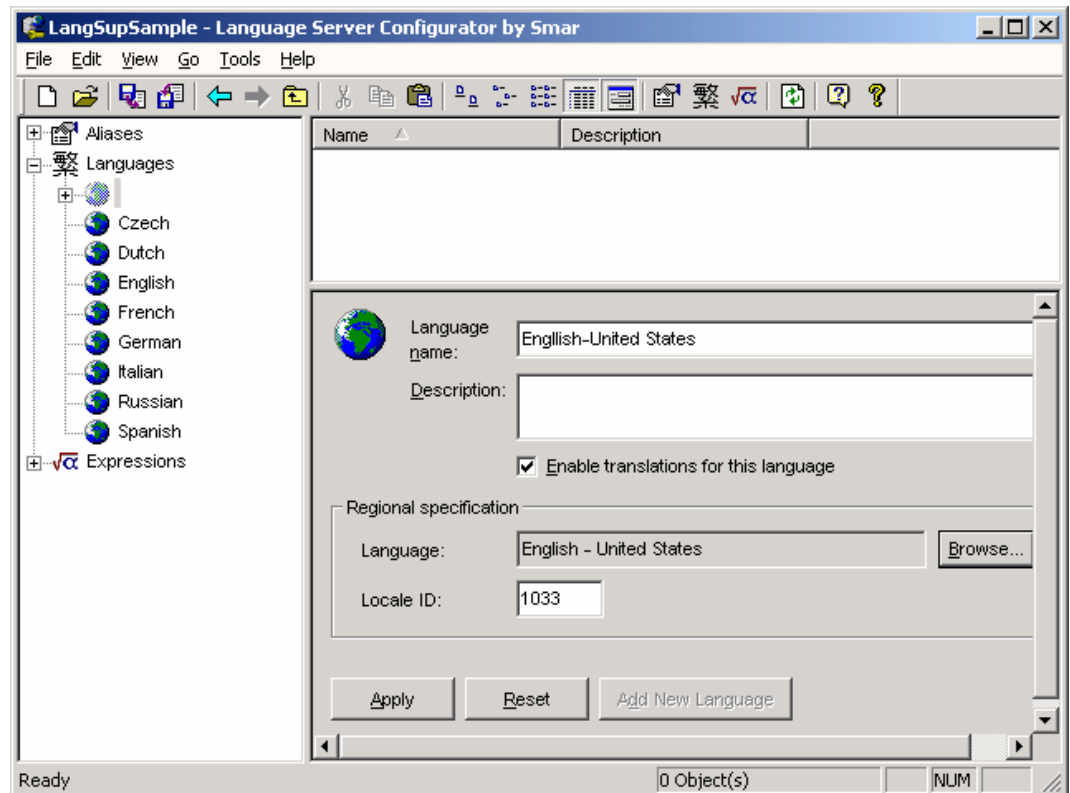
The Language Configurator provides Czech, Dutch, English, French, German, Italian, Russian, and Spanish as default languages. To add a new language to your configuration database:

1. Click the **New 'Regional Specification'** button on the **Data-Manipulation toolbar**. Or right-click **Languages** on the tree view of the left-hand pane of the Configurator screen, select **New > Language** from the pop-up menu, as shown in the figure below. You can also press the shortcut keys **CTRL+L**.



Adding a New Language

- This opens the **Language Configuration** dialog box in the right-hand pane of the Configurator screen, as shown in the figure below. Click **Browse** and select the language you would like to add. The language you have selected will automatically be displayed in the **Language Name** field. You may change this name if you wish. The **Locale ID** that corresponds with the selected language will also be displayed automatically. You can include additional comments in the **Description** field. Make sure that the **Enable Translations for This Language** check box is checked.
- Click **Apply**.

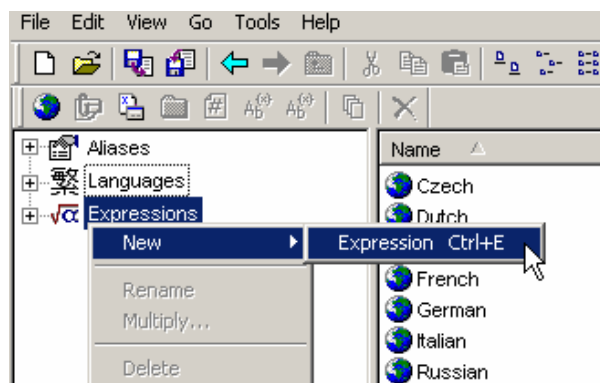


Language Properties

Adding a New Expression

Expressions enable you to make unit conversions as well as number-formatting conversions. To add a new expression to your configuration database:

- Click the **New 'Expression'** button on the **Data-Manipulation toolbar**. Or right-click **Expressions** on the tree view of the left-hand pane of the Configurator screen, select **New > Expression** from the pop-up menu, as shown in the figure below. You can also press the shortcut keys **CTRL+E**.



Adding a New Expression

- This opens the **Expression Configuration** dialog box in the right-hand pane of the Configurator screen, as shown in the figure below. Enter a name for this expression in the **Expression Name** field. You can include additional comments in the **Description** field.
- Add the **Read** and **Write** Expressions in the **Expression Parameters** field. To use the **Expression Editor**, click **Exp** to open the **Edit Expression** dialog box. For example, to have an expression that converts inches to centimeters you would type the following:

Read Expression: $x=\{x\}*2.54$

Write Expression: $x=\{x\}/2.54$

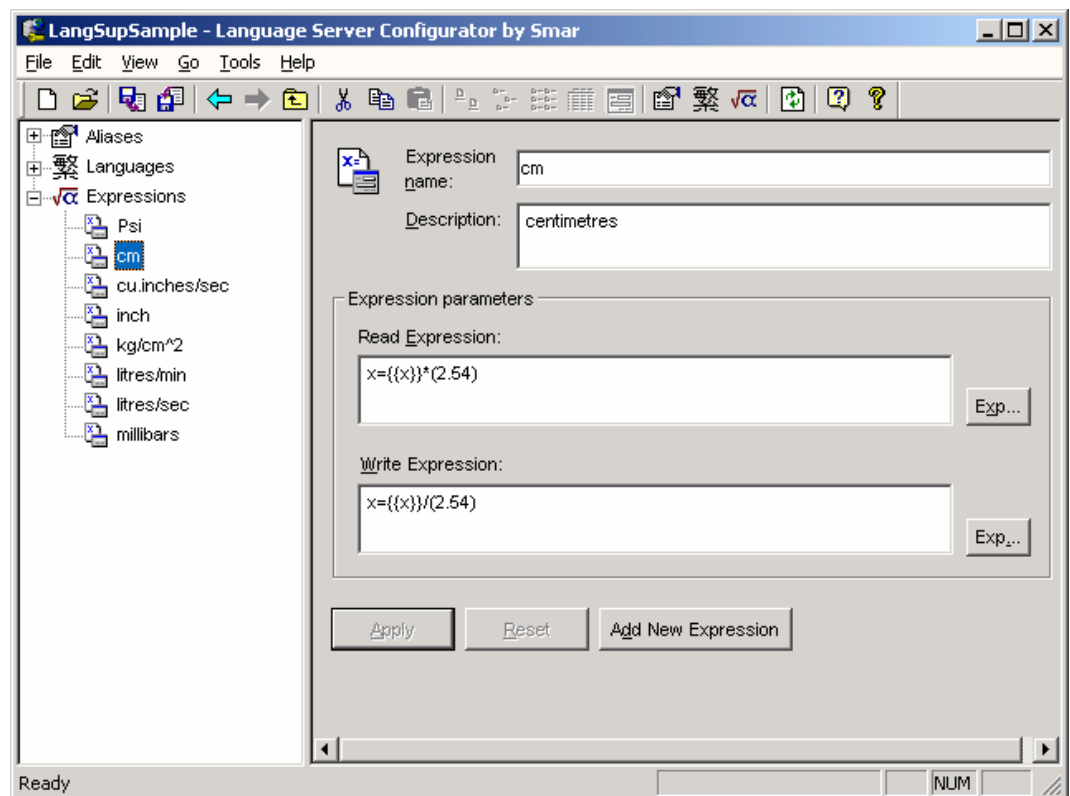
If *inch* were the default unit, you would type the following for inches:

Read Expression: $x=\{x\}$

Write Expression: $x=\{x\}$

- Click **Apply**.

Note: For more information about expressions, please see the **Expression Editor** documentation.

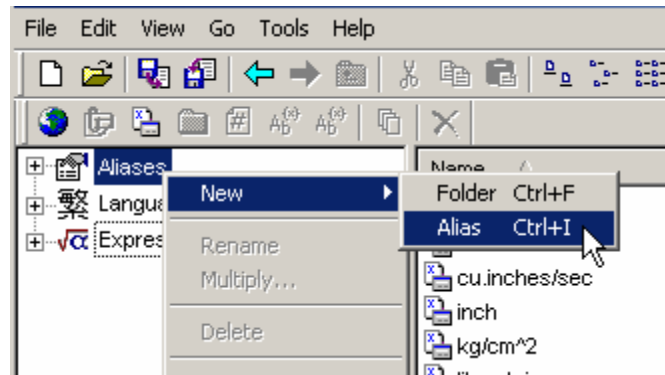


Expression Properties

Adding a New Alias

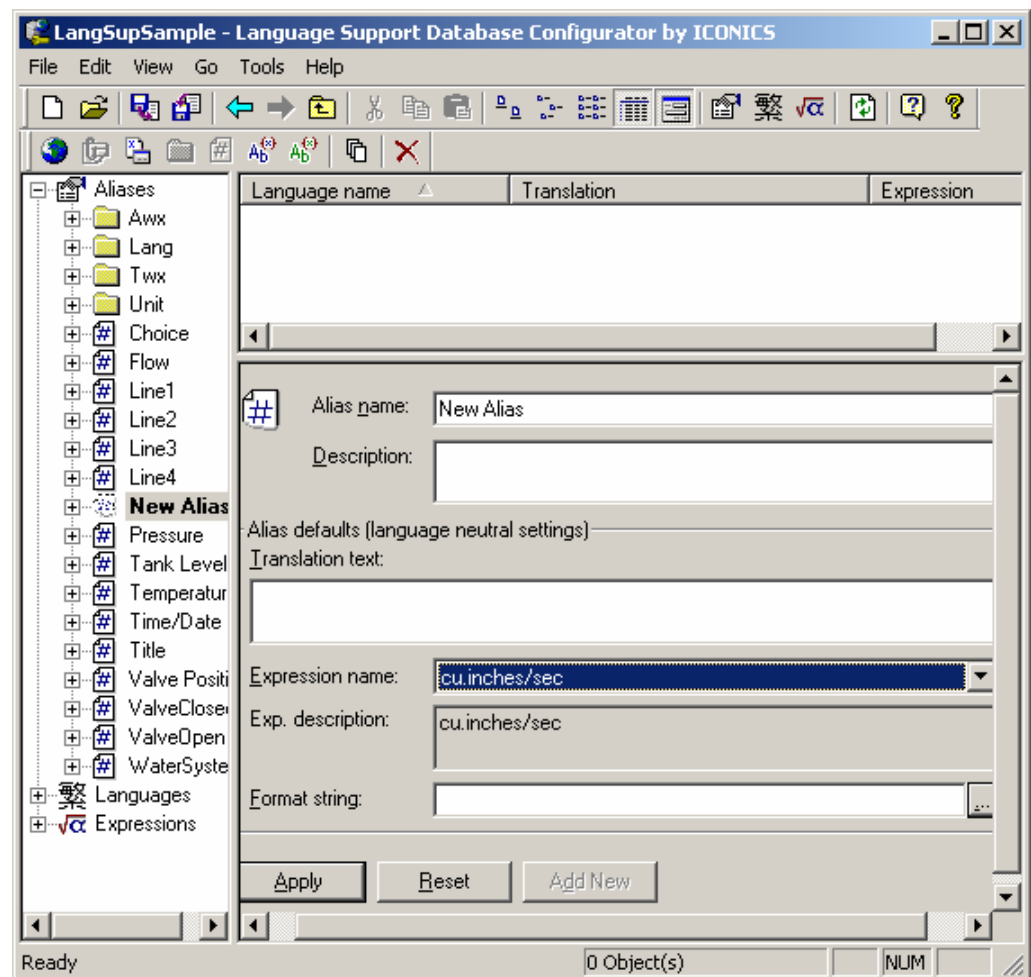
You must add a new Alias for every item you wish to convert. To add a new Alias to your configuration database, use the following procedure:

1. Click the **New 'Alias'** button on the **Data-Manipulation toolbar**. Or right-click **Aliases** on the tree view of the left-hand pane of the Configurator screen, select **New > Alias** from the pop-up menu, as shown in the figure below. You can also press the shortcut keys **CTRL+I**.



Adding a New Alias

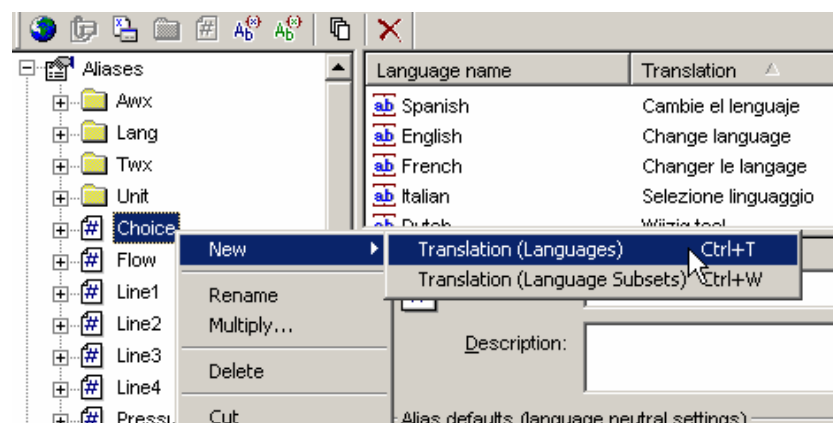
2. This opens the **Alias Configuration** dialog box in the right-hand pane of the Configurator screen, as shown in the figure below. Enter a name for the alias in the **Alias Name** field. This is the string that must appear between the alias delimiters in configurations for displays. Note that you can copy the string from your display and paste it into this field. You can include additional comments in the **Description** field.
3. Enter the default information for the new alias in the **Alias Defaults** field.
 - **Translation text.** Enter the text that will appear as the default text.
 - **Expression name.** From the list of expressions, choose the expression that will be the default expression. The list will include all expressions you have created.
 - **Exp. description.** This field will automatically include any additional comments you added in the **Description** when you created the expression.
 - **Format string.** Click the button at right to open the **Format String Editor** dialog box, which enables you to choose how to format the string.
4. Click **Apply**.
5. You must now add a new language translation for each language or language subset you wish to use with this Alias. For more information, see **Configuring a Language Translation**.

**Alias Properties**

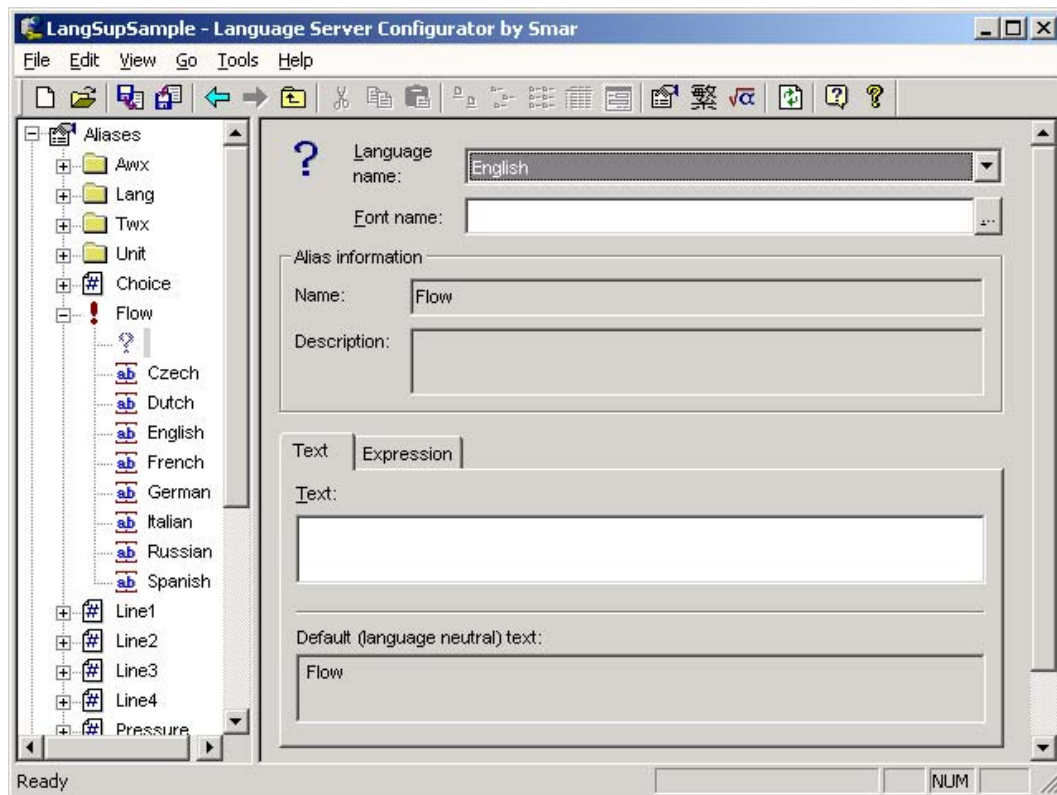
Configuring a Language Translation

You must configure a language translation for each language under each alias you wish to convert. To configure a language translation, use the following procedure:

1. Select the alias name, and then click the **New 'Translation (Languages)'** button on the **Data-Manipulation toolbar**. Or right-click the alias name on the tree view of the left-hand pane of the Configurator screen, select **New > Translation (Languages)** from the pop-up menu, as shown in the figure below. You can also press the shortcut keys **CTRL+T**.

**Creating a New Language Translation**

2. This opens the **Language Translation** dialog box in the right-hand pane of the Configurator screen, as shown in the figure below. Choose a language from the list in the **Language Name** field, which will include all languages you have added.
3. If you wish to apply a font other than the default, click the button to the right of the **Font Name** field. This opens the **Select Font** dialog box, which enables you to choose a font.
4. The **Alias Information** field will display the name of the alias for which you are creating translation and any description you added to that alias.



Configuring a Language Translation

Text Translation

For a text translation, enter the appropriate text in the language you are configuring in the **Text** field of the **Text** tab, shown above. This is what will appear when the language is converted. If you set up a default text under your alias configuration, it will appear in the **Default Text** field. Click **Apply** when you are finished.

Expression Translation

For an expression translation, choose from the list of expression names in the **Name** field of the **Expression** tab, shown in the figure below. The list will include all expressions you have created. If you added a description with the expression, it will appear in the **Description** field. The **Format String** field allows you to set the format for the string to be displayed. If you set up a default expression under your alias configuration, it will appear in the **Default Name** field. Click **Apply** when you are finished.

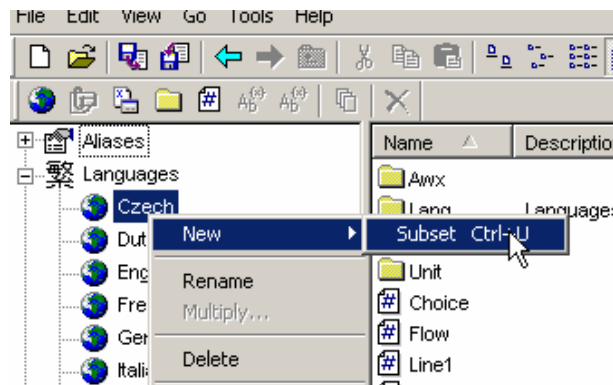
Expression Translation

Note: If you will be applying a language subset, see **Creating Language Subsets**.

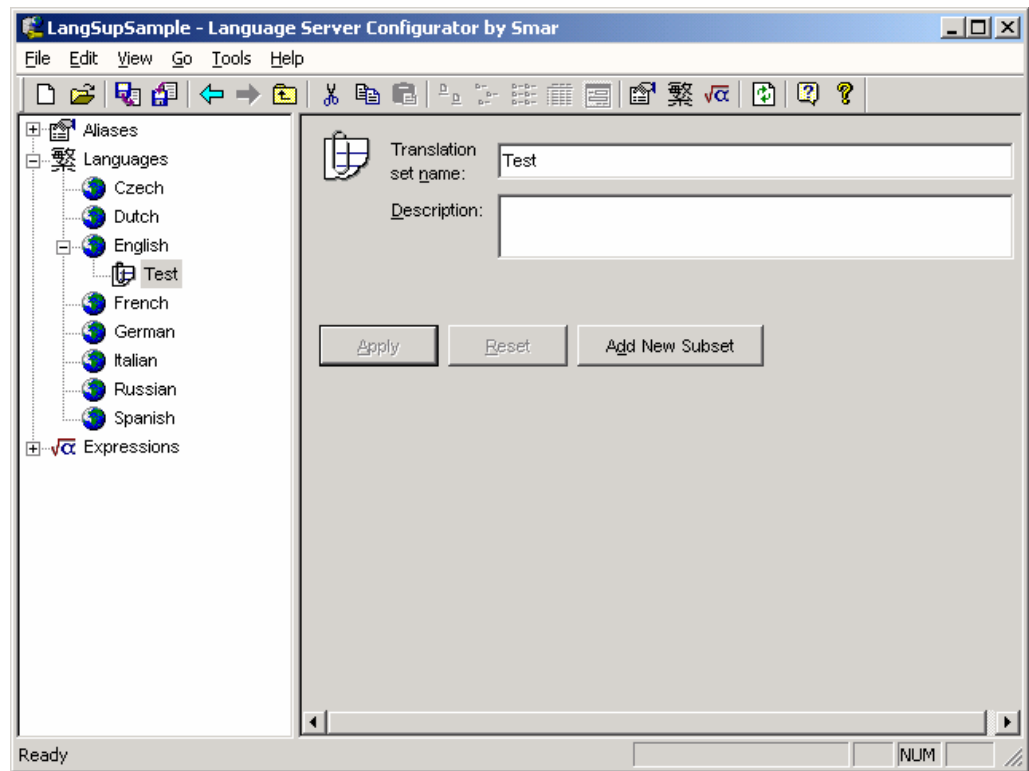
Creating Language Subsets

Language subsets allow you to create an additional configuration to be used with a language. You can apply a language with a translation other than the default for that language. The purpose of language subsets is to provide different measurement systems for a selected language translation. For example, if you have added the language "English," you can apply metric conversions as well as US standard conversions to that language. To create a language subset, use the following procedure:

1. Select the language, and then click the **New 'Subsets'** button on the **Data-Manipulation toolbar**. Or right-click the language on the tree view of the left-hand pane of the Configurator screen, select **New > Subset** from the pop-up menu, as shown in the figure below. You can also press the shortcut keys **CTRL+U**.

**Creating a New Language Subset**

2. This opens the **Language Subsets** dialog box in the right-hand pane of the Configurator screen, as shown in the figure below. Enter a name in the **Translation Set Name** field. You can include additional comments in the **Description** field.
3. Click **Apply**.

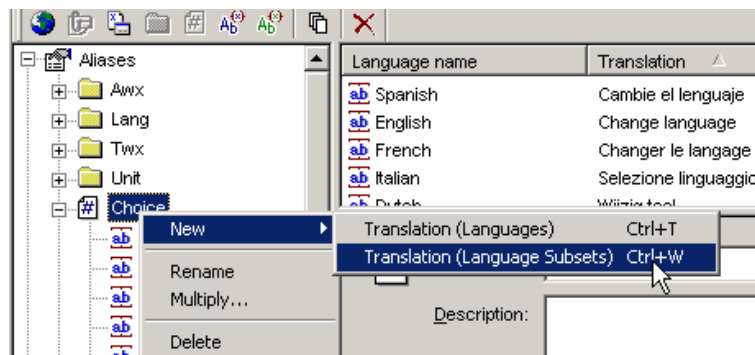


Configuring a Language Subset

Applying a Language Subset to an Alias

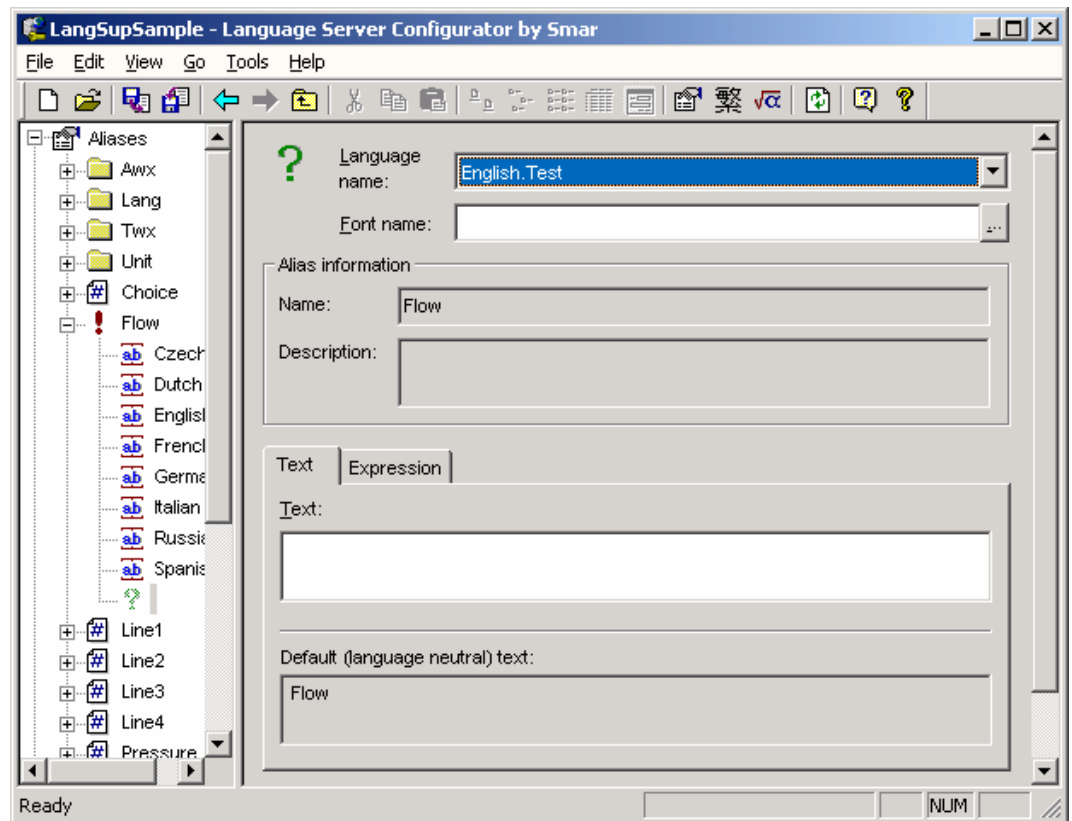
To apply a language subset to an alias, use the following procedure:

1. Select the alias name, and then click the **New 'Translation (Language Subsets)'** button on the **Data-Manipulation** toolbar. Or right-click the alias name on the tree view of the left-hand pane of the Configurator screen, select **New > Translation (Language Subsets)** from the pop-up menu, as shown in the figure below. You can also press the shortcut keys **CTRL+W**.



Applying a Language Subset to an Alias

2. This opens the **Language Subsets Translation** dialog box in the right-hand pane of the Configurator screen, as shown in the figure below. In the **Language Name** field, choose from the list of language names, which will include all language subsets you have created.
3. If you wish to apply a font other than the default, click the button to the right of the **Font Name** field. This opens the **Select Font** dialog box, which enables you to choose a font.
4. The **Alias Information** field will display the name of the alias for which you are creating translation and any description you added to that alias.



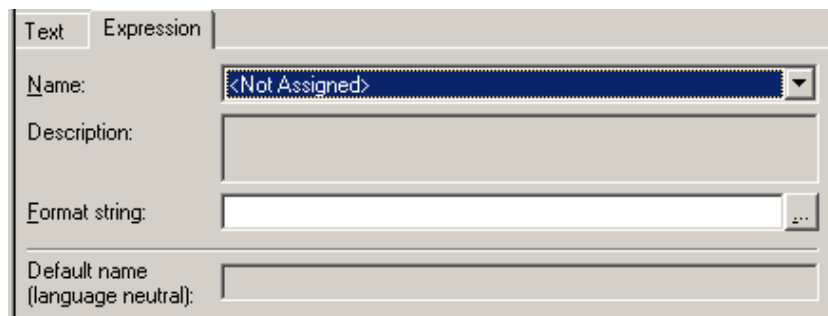
Applying a Language Subset to an Alias

Text Translation

For a text translation, enter the appropriate text in the language you are configuring in the **Text** field of the **Text** tab, shown above. This is what will appear when the language is converted. If you set up a default text under your alias configuration, it will appear in the **Default Text** field. Click **Apply** when you are finished.

Expression Translation

For an expression translation, choose from the list of expression names in the **Name** field of the **Expression** tab, shown in the figure below. The list will include all expressions you have created. If you added a description with the expression, it will appear in the **Description** field. The **Format String** field allows you to set the format for the string to be displayed. If you set up a default expression under your alias configuration, it will appear in the **Default Name** field. Click **Apply** when you are finished.

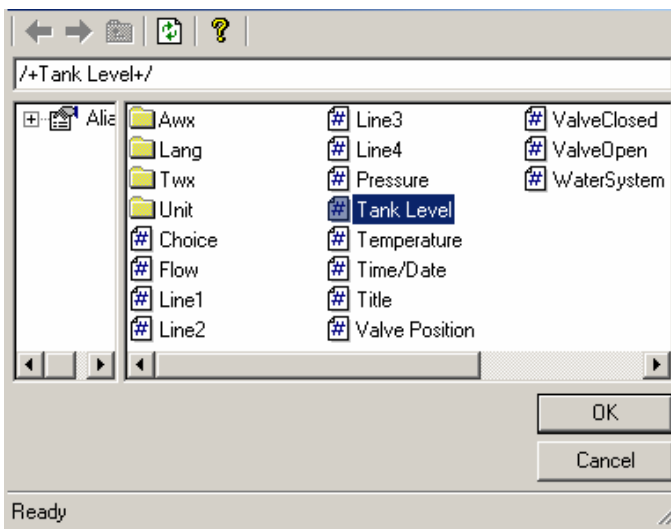


Expression Translation

Using the Language Alias Browser

Throughout the ProcessView client applications, such as GraphWorX, TrendWorX, and AlarmWorX, you can use language aliases in certain data fields (e.g. process points and trend pens). To select language aliases, you can open the **Language Alias Browser**, shown in the figure below. The Language Alias Browser includes all language aliases in the active language aliasing configuration database. This eliminates the need to manually type in the alias names. All language aliases that are configured in the Language Aliasing Configurator are conveniently available to choose from inside the browser. The tree control of the Language Aliasing Configurator is mimicked in the tree control of the Language Alias Browser.

Language aliases use the following syntax: **/+language_alias_name+/. Select a global alias by double-clicking the alias name (e.g. "Valve Position" in the figure below). The alias name /+Valve Position+/. appears at the top of the browser, which automatically adds the /+ and +/ delimiters to the alias name. Click the **OK** button.**



Selecting an Alias From the Language Alias Browser

Language Server

The Language COM Server is the heart of the Language-Switching utility. It services requests from the connected client programs. The main purpose of the language server is to find translation parameters for given alias names. The language server configuration data (translation parameters, alias names, and supported languages) are stored in a database (Microsoft Access, MSDE or Microsoft SQL Server).

The language server is designed as an out-of-process COM object that supports two kinds of interfaces: Custom interface and Dual interface.

OLE Automation Objects and Interfaces

Type Library

VB uses the LangServer Type Library to define the following interfaces. Make sure that (in Visual Basic) "Project | References" has "SMAR Language Tool 1.0 Type Library" checked.

LangServer Object

| | |
|-------------|---|
| Description | A language server client creates the LangServer automation object. The LangServer object can be used to obtain language translations and general information about a language server. |
| Syntax | LangServer |
| Example | Dim ALangServer As LangServer Set ALangServer = New LangServer |

Summary of Properties

| | | |
|---------------------|-------------------|----------------|
| AliasStartDelimiter | ConfigurationDSrc | LoggingEnabled |
| AliasStopDelimiter | LoggerDSrc | VariableText |

Summary of Methods

| | | |
|--------------------|-------------------------|-------------|
| GetTranslationText | GetTranslationRecordset | GetLocaleID |
|--------------------|-------------------------|-------------|

LangServer Properties

AliasStartDelimiter

| | |
|-------------|---|
| Description | (Read-only) Returns the opening delimiter string for translation alias. The LangServer object uses this string to identify the beginning of the alias string in an input string. |
| Syntax | AliasStartDelimiter As String |
| Remarks | This property, as well as other properties, is stored in the language-configuration database. An error occurs if the server has not been able to connect to the configuration database. |
| Example | Dim AnAliasStartDelimiter As String AnAliasStartDelimiter = AnLangServer.AliasStartDelimiter |

AliasStopDelimiter

| | |
|-------------|---|
| Description | (Read-only) Returns the ending delimiter string for translation alias. The LangServer object uses this string to find out the end of the alias string in an input string. |
| Syntax | AliasStopDelimiter As String |
| Remarks | This property, as well as other properties, is stored in the language-configuration database. An error occurs if the server has not been able to connect to the configuration database. |
| Example | Dim AnAliasStopDelimiter As String AnAliasStopDelimiter = AnLangServer.AliasStopDelimiter |

ConfigurationDSrc

| | |
|-------------|--|
| Description | (Read-only) Returns the file path that LangServer object is using to connect to the configuration database. It can be the file path to a MS Access database file (extension .mdb) or to a MS data link file (extension .udl). Data link file is a text file that contains an OLE DB connection string. |
| Syntax | ConfigurationDSrc As String |
| Remarks | This property is stored in the computer registry database. No errors should occur. |
| Example | Dim LangServerConfigurationDataSource As String LangServerConfigurationDataSource = AnLangServer.ConfigurationDSrc |

LoggerDSrc

| | |
|-------------|--|
| Description | (Read-only) Returns the file path that the LangServer object is using to connect to the message log database. It can be the file path to a MS Access database file (extension .mdb) or to a MS data link file (extension .udl). Data link file is a text file that contains an OLE DB connection string. |
| Syntax | LoggerDSrc As String |
| Remarks | This property is stored in the computer registry database. No errors should occur. |
| Example | Dim LangServerLoggerDataSource As String LangServerConfigurationDataSource = AnLangServer.LoggerDSrc |

LoggingEnabled

| | |
|-------------|--|
| Description | (Read-only) When TRUE, then the LangServer object logs information and warning messages to the database specified in the LoggerDsrc property. If FALSE, then the server does not log any message to the logger database. |
| Syntax | LoggingEnabled As Boolean |
| Remarks | This property, as well as other properties, is stored in the language-configuration database. An error occurs if the server has not been able to connect to the configuration database. |
| Example | Dim ALoggingEnabled As Boolean ALoggingEnabled = ALangServer.LoggingEnabled |

VariableText

| | |
|-------------|--|
| Description | (Read-only) Returns the expression variable identification string. This string identifies the input value in the expression string. The language server client should replace all occurrences of this string in an expression string with "real" input value and then evaluate it using the expression engine. |
| Syntax | VariableText As String |
| Remarks | This property value is hard-coded in the LangServer object. In future versions, it will be stored in the configuration database. |
| Example | Dim AVariableText As String AVariableText = ALangServer.VariableText |

LangServer Methods

GetTranslationText

| | |
|-------------|--|
| Description | Returns the text translation(s) for a specified AliasID string. |
| Syntax | GetTranslationText (AliasID As String, Language As String, LanguageSubset As String, ClientIdentification As String, ErrorMessageLocaleID As Long, FontFaceName As String) As String |

| Part | Description |
|----------------------|--|
| AliasID | The AliasID string contains alias name(s) for which the caller wants to read the text translation(s). For the AliasID string "any text <i>Alias1</i> any other text <i>Alias2</i> etc..." the result will be "any text <i>TextTranslation1</i> any other text <i>TextTranslation2</i> etc...". |
| Language | The Language name for which the caller wants to read the translation(s). |
| LanguageSubset | The Language subset name for which the caller wants to read the translation(s). It can be an empty string if the caller wants to read translation for default language subset. |
| ClientIdentification | The LangServer object uses the ClientIdentification string to identify message records in the logger database. It should contain a unique client identification (including e.g. display name) and node information. |
| ErrorMessageLocaleID | The ErrorMessageLocaleID parameter is the locale ID that the LangServer object will use to create an error message description (method IErrorInfo::GetDescription(...)). |
| FontFaceName | The FontFaceName returns font face name associated with the first alias string in AliasID parameter. The client should use the font face name to display translated text. If the FontFaceName is an empty string, then the client uses its default settings. |

| | |
|---------|---|
| Remarks | This method can fail from many reasons. Three basic reasons are: <ol style="list-style-type: none"> 1. The LangServer object has not been able to connect the configuration database. 2. AliasID string contains invalid delimiters (opening delimiter was found but not ending, etc.). 3. Language or Language Subset string does not exist in the configuration database. |
|---------|---|

```

Private Sub cmdSomeButton_Click()
    On Error GoTo L_ERROR
    ' Read translation text for two aliases with names "Alias1" and "Alias2";
    ' delimiters are `` and "

    Dim ALangServer As LangServer           ' Declare Alias Server
    Set ALangServer = New LangServer        ' Create an instance
    If ALangServer Is Nothing Then         ' Check for failure
        MsgBox "Failed to create an instance of 'LangServer'", vbOKOnly, "SMAR LangServer"
    Exit Sub

    End If

    Dim FontName As String
    Dim Text As String

    ' Get translation for language "English - United States" and default language subset; error
    ' messages in English
    strText = ALangServer.GetTranslationText("``Alias1" ``Alias2"", "English - United States", "", "My
identification", 1033, strFontName)

    ' Some code to show the results (strText, strFontName)...
    Set ALangServer = Nothing
    Exit Sub

L_ERROR:                                ' Handle errors
    LblTranslText.Caption = ""
    MsgBox "Failed to obtain alias: " & Err.Description, vbOKOnly, "SMAR AliasServer"
End Sub

```

GetTranslationRecordset

| | |
|-------------|---|
| Description | Returns the LangServerRecVarDescriptor object that contains all translation parameters (text translation, read/write expressions, etc.) for a specified AliasID string. |
| Syntax | GetTranslationRecordset (AliasID As String, Language As String, LanguageSubset As String, ClientIdentification As String, ErrorMessageLocaleID As Long, Descriptor As LangServerRecVarDescriptor) |

| Part | Description |
|----------------------------|--|
| AliasID | The AliasID string has to contain alias name for which the caller wants to read the translation parameters. This method returns translation parameters for the first found alias name only (compare with GetTranslationText method). |
| Language | The Language name for which the caller wants to read the translation parameters. |
| LanguageSubset | The Language subset name for which the caller wants to read the translation parameters. It can be an empty string if the caller wants to read translation parameters for default language subset. |
| ClientIdentification | The LangServer object is using the ClientIdentification string to identify message records in the logger database. It should contain unique client identification (including e.g. display name) and node information. |
| ErrorMessageLocaleID | The ErrorMessageLocaleID parameter is the locale ID that the LangServer object will use to create an error message description (method IErrorInfo::GetDescription(.....)). |
| LangServerRecVarDescriptor | The GetTranslationRecordset method is using this object to return all translation parameters (see chapter LangServerRecVarDescriptor for details). |

| | |
|---------|--|
| Remarks | <p>This method can fail from many reasons. Four basic reasons are:</p> <ol style="list-style-type: none"> 1. The LangServer object has not been able to connect the configuration database. 2. AliasID string contains invalid delimiters (opening delimiter was found but not ending, etc.). 3. AliasID string does not contain any translation alias name. 4. Language or Language Subset string does not exist in the configuration database. |
|---------|--|

```

Private Sub cmdSomeButton_Click()
    On Error GoTo L_ERROR
    ' Read translation parameters for alias with name "Alias1"; delimiters
    ' are `` and "

    Dim ALangServer As LangServer          ' Declare Alias Server
    Set ALangServer = New LangServer       ' Create an instance
    If ALangServer Is Nothing Then        ' Check for failure
        MsgBox "Failed to create an instance of 'LangServer'", vbOKOnly, "SMAR LangServer"
    Exit Sub
    End If

    Dim RecDescriptor As LangServerRecVarDescriptor ' Declare descriptor object

    ' Get translation parameters for language "English - United States" and
    ' default language subset
    Call ALangServer.GetTranslationRecordset ("`Alias1'", "English - United States", "", "My identification",
    1033, RecDescriptor)

    ' Add some code to show the results from RecDescriptor:
    ' RecDescriptor.TranslationText, RecDescriptor.ExpressionFormat, etc.

    Set ALangServer = Nothing
    Exit Sub

L_ERROR:                                ' Handle errors
    LblTranslText.Caption = ""
    MsgBox "Failed to obtain alias: " & Err.Description, vbOKOnly, "SMAR AliasServer"
End Sub
    
```

GetLocaleID

| | |
|-------------|--|
| Description | Returns the locale ID associated with specified Language name. |
| Syntax | GetLocaleID (Language As String, ErrorMessageLocaleID As Long) As Long |

| Part | Description |
|----------------------|--|
| Language | The Language name for which the caller wants to read the locale ID. |
| ErrorMessageLocaleID | The ErrorMessageLocaleID parameter is the locale ID that the LangServer object will use to create an error message description (method IErrorInfo::GetDescription(...)). |

| | |
|---------|---|
| Remarks | This method can fail from many reasons. Two basic reasons are: 1. The LangServer object has not been able to connect the configuration database. 2. Language string does not exist in configuration database, |
| Example | <pre> Private Sub cmdSomeButton_Click() On Error GoTo L_ERROR Dim ALangServer As LangServer ' Declare Alias Server Set ALangServer = New LangServer ' Create an instance If ALangServer Is Nothing Then ' Check for failure MsgBox "Failed to create an instance of 'LangServer'", vbOKOnly, "SMAR LangServer" Exit Sub End If Dim LanguageLCID As Long ' Get LCID for language "English - United States" LanguageLCID = ALangServer.GetLocaleID ("English - United States", 1033) ' Add some code to show the result Set ALangServer = Nothing Exit Sub L_ERROR: ' Handle errors LblTranslText.Caption = "" MsgBox "Failed to obtain alias: " & Err.Description, vbOKOnly, "SMAR AliasServer" End Sub </pre> |

LangServerRecVarDescriptor Object

| | |
|-------------|---|
| Description | The LangServerRecVarDescriptor object is a collection of translation properties. All supported properties are |
|-------------|---|

| | |
|---------|---|
| | read-only. The LangServer object creates the LangServerRecVarDescriptor object and initializes it with translation parameters (see GetTranslationRecordset method in LangServer object). The client then can read all these properties to get translation parameters. |
| Syntax | LangServerRecVarDescriptor |
| Example | Dim ADescriptor As LangServerRecVarDescriptor |

Summary of Properties

| | | |
|-----------------|------------------|----------------|
| TranslationText | ExpressionFormat | ReadExpression |
| WriteExpression | FontFaceName | |

LangServerRecVarDescriptor Properties

TranslationText

| | |
|-------------|---|
| Description | (Read-only) Returns the translation text for a specified alias. |
| Syntax | TranslationText As String |
| Remarks | The TranslationText value is created similarly to the result of GetTranslationText method (LangServer object) but it returns translation text for the first found alias only. |
| Example | Dim ATranslationText As String ATranslationText = ADescriptor.TranslationText |

ExpressionFormat

| | |
|-------------|---|
| Description | (Read-only) Returns the expression format string associated with a specified alias. This format string should be used to format numeric (expression results) or date values. If this string is empty then no formatting should be done. The format string is using following syntax: 1. Numeric formats: "TYPE=<type_name> FORMAT=<format_string>" where <i>type_name</i> can be one of following: FLOAT, DOUBLE, BOOL, BYTE, WORD, DWORD, CHAR, SHORT, LONG and <i>format_string</i> is the string that uses "x" characters to specify numeric or decimal places, "." character specifies decimal point. 2. Date-time formats: "TYPE=<DATETIME> TIME=<time_format_string> DATE=<date_format_string>". DATE and TIME keywords are optional; if the formats string contains both then their order specifies the order of time and date values in the result. |
| Syntax | ExpressionFormat As String |
| Example | Dim AnExpressionFormat As String AnExpressionFormat = ADescriptor.ExpressionFormat |

ReadExpression

| | |
|-------------|---|
| Description | (Read-only) Returns the read expression string associated with specified alias. The client uses this expression to convert read value for a specified language (or language subset) translation. If the ReadExpression contains an empty string, then no conversion is necessary. |
| Syntax | ReadExpression As String |
| Remarks | The expression string contains special substring(s) defined by <i>VariableText</i> property in LangServer object. This substring should be replaced by input value, and then this expression string can be evaluated using the expression engine .dll. |
| Example | Dim AReadExpression As String AReadExpression = ADescriptor.ReadExpression |

WriteExpression

| | |
|-------------|---|
| Description | (Read-only) Returns the write expression string associated with a specified alias. The client uses this expression to convert a written value for a specified language (or language subset) translation. If the ReadExpression contains an empty string, then no conversion is necessary. |
| Syntax | WriteExpression As String |
| Remarks | The expression string contains special substring(s) defined by <i>VariableText</i> property in LangServer object. This substring should be replaced by the input value, and then this expression string can be evaluated using the expression engine .dll. |
| Example | Dim AWriteExpression As String AWriteExpression = ADescriptor.WriteExpression |

FontFaceName

| | |
|-------------|---|
| Description | (Read-only) Returns the font face name associated with a specified alias. The client should use the font face name to display translated text. If the FontFaceName is an empty string, then the client uses its default settings. |
| Syntax | FontFaceName As String |
| Example | Dim AFontFaceName As String AFontFaceName = ADescriptor.FontFaceName |