

### LD1.0DTM - Device Type Manager

**LD1.0**  
Transmissor de Pressão Manométrica

smar

OnLine Parameterize

- Blocks
  - Identification
    - Device
    - Sensor
  - Configuration
    - Range
  - Calibration
    - Trim Parameters
  - General
    - Counters
- OffLine Parameterize
- Observe
- Diagnosis

Tag: LD1.0  
Descriptor: DESCRIPTOR  
Message: MESSAGE  
Manufacturer: Smar  
Device Type: LD1.0  
Device ID: 0

Write

Connected





Specifications and information are subject to change without notice.  
Up-to-date address information is available on our website.

web: [www.smar.com/contactus.asp](http://www.smar.com/contactus.asp)

# INTRODUCTION

LD1.0DTM is from the family of Smar's DTMs HART. With LD1.0DTM is possible to have access to many functionalities of LD1.0 transmitter:

- ✓ Transmitter Identification and Manufacturing Data;
- ✓ Primary Variable Trim – Pressure;
- ✓ Primary Variable Trim – Current;
- ✓ Transmitter Adjustment to the Working Range;
- ✓ Engineering Unit Selection;
- ✓ Device Configuration;
- ✓ Equipment Maintenance.

For further details about topics above, refer to the LD1.0 manual.



---

# TABLE OF CONTENTS

<b>LD1.0DTM .....</b>	<b>7</b>
Installation .....	7
Topology.....	7
Layout.....	8
Communication .....	9
Response Code.....	9
LD1.0DTM Functions.....	9



# LD1.0DTM

## Pre - Requirements

The user needs to be familiar with the use of frame application FDT (Field Device Tool).

## Installation

To do the LD1.0DTM Installation and all Smar’s DTMs, run **setup.exe** from CD “**Smar Device Library**”. After ending the CD-ROM installation, get into DTMs catalog from frame application to update DTMs list.

The download of installation package of Smar’s DTMs can be done at <http://www.smar.com/support.asp>. The user has to do a login at site.

LD1.0DTM could be integrated in all frame applications that comply with the version 1.2 of the FDT/DTM standard.

## Topology

After LD1.0DTM is installed and included at DTMs frame application catalog, a DTMs topology must be mounted (representing the devices physical topology).

On top must be inserted the communication DTM (responsible for communication between the computer and the first element from physical topology). The LD1.0DTM is the last element of topology (represents the LD1.0).

In some cases, is necessary a DTM gateway type (responsible for communication protocol conversion). The LD1.0DTM could be used with Communication DTM and Gateway DTM from other manufacturers, if they comply with FDT 1.2 standard.

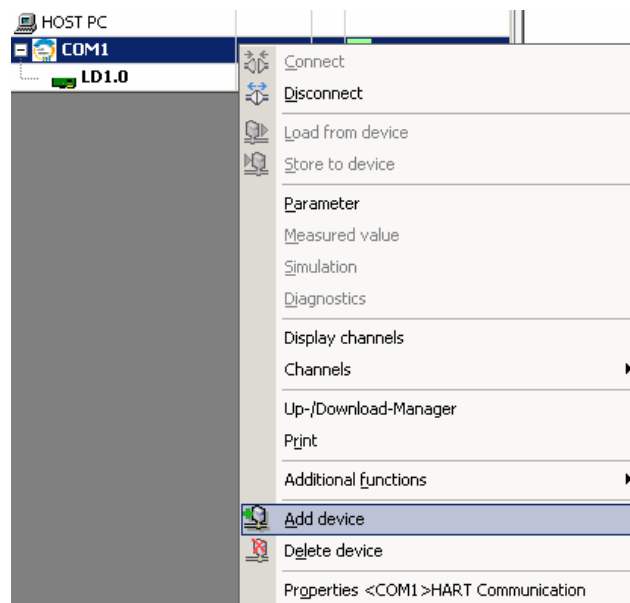


Figure 1 – “Add Device” Screen

Before changing LD1.0DTM to online, verify in the topology, if the address set in LD1.0DTM is the same of the LD1.0 device address. If it is not, change to the correct address through the communication DTM.

While the LD1.0DTM is offline (not connected), only the option **Offline Parameterize** will be enabled. After connected, will be possible to have online access to many functionalities of LD1.0:

- Online Parameterize
- Observe
- Diagnosis

## Layout

The DTM's from Smar follow a standard layout. The parameters are distributed in many screens according to its functionality. The screens can be accessed by clicking the DTM options. Every time you click an option, all the screen parameters relative to the selected option will be read from the device.

Each DTM screen with parameters that can be written has a **Write** button. When any parameter is modified, the relative field will change its color. After writing, the DTM realizes the reading of the changed parameters and updates the screen.

In the figure below, the LD1.0DTM Online Parameterization navigation tree can be seen. The other options also appear.

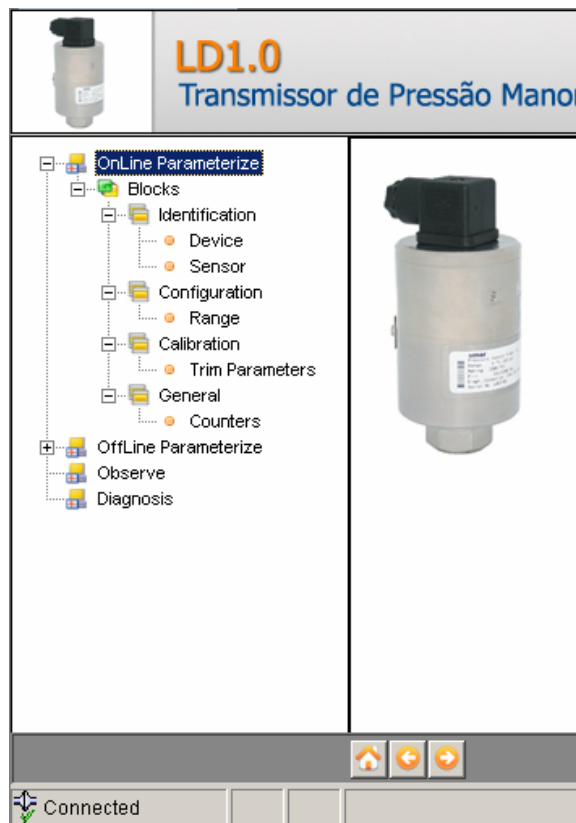



Figure 2 – LD1.0DTM navigation tree

In the window's bottom part the user has access to navigation buttons . They allow go to home page, back to previous page or go to next page, respectively.

The communication status can be verified - connected or disconnected:





## Communication

LD1.0DTM sends the #0 command at each 4 seconds and in case LD1.0 does not answer after 2 tries, the following message will appear:

“Communication error detected. No response from device.” In this case, verify if any connection is broken or if the device is off.

Is not possible read / write any parameter in case the connected equipment is not LD1.0, not even the Universal Commands and Common Practice of HART protocol.

## Response Code

When some writing or reading fail occurs, the LD1.0DTM displays a message coming from Response Code sent by LD1.0.

## LD1.0DTM Functions

Below we have a brief description about each LD1.0DTM function.

1. **Online Parameterize** – This function is used to make the LD1.0 online parameterization, is enabled when the LD1.0DTM is online. The user access level for this function is “Operator” (read only) and “Maintenance” (complete access).



Figure 3 – LD1.0DTM “Online Parameterize” Screen

2. **Offline Parameterize** - This function is used to make the LD1.0 offline parameterization, the parameter values configured in this function can be written in LD1.0 through the **Download** function. The user access level for this function is “Maintenance”.



Figure 4 – LD1.0DTM “Offline Parameterize” Screen

3. **Observe** – Through this function is possible to monitor the LD1.0 process variables: Out (mA), Out (%), PV (%), PV (mmH<sub>2</sub>O).

The user chooses four variables to monitor and also has access to the variables monitoring used in the transmitter calibration. This function is enabled when the LD1.0DTM is online. The user access level for this function is “Operator”.



Figure 5 – LD1.0DTM “Observe” Screen

4. **Diagnosis** – Through this function the user has access to the LD1.0 diagnostic parameters. This function is enabled when the LD1.0DTM is online. The user access level for this function is “Operator”.



Figure 6 – LD1.0DTM “Diagnosis” Screen

5. **Upload** - This function reads the LD1.0 parameters and updates the LD1.0DTM database with the recent values. This function is enabled when the LD1.0DTM is online. The user access level for this function is “Maintenance”.
6. **Download** - This function writes the parameters configured in the LD1.0 **Offline Parameterize** function. This function is enabled when the LD1.0DTM is online. The user access level for this function is “Maintenance”.

