

system 302

enterprise automation

Asset management tool



AssetView

AssetView

AssetView is an asset management system that supports equipments for Foundation Fieldbus, HART and Profibus protocols using simultaneously both standard technologies: EDDL and FDT/DTM.

From a list of configured field devices, it's possible to access directly the chosen equipment DTM for parameterization operation, upload, download. There is no need to build the topology manually either using drag and drop way.

Using AssetView, operator can perform maintenances through schedule programming, notifications by e-mail, with no need of specific software for maintenance management.

AssetView also allows the equipment inclusion in a library that contains datasheets, manuals, maintenance procedures, notes, pictures and internet links for their manufacturers.

Benefits

- Simplify the work
- Best practice of Maintenance with significant savings
- Quick troubleshooting, additional functions can now be used and potential failures can be recognized in good time.
- Open solution
- Easy access to information.



smar
www.smar.com

system
302
enterprise automation

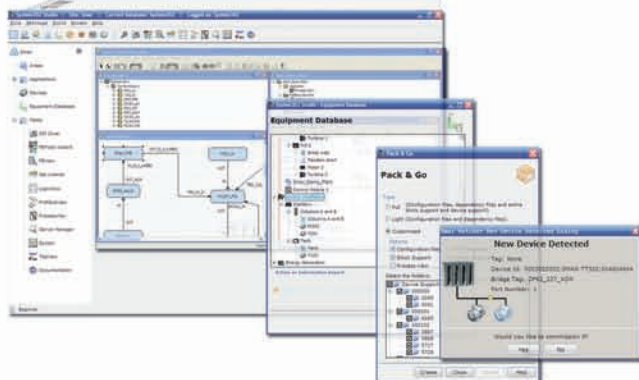
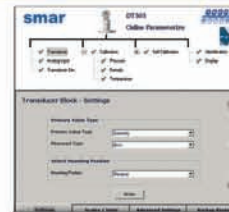
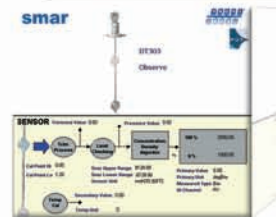
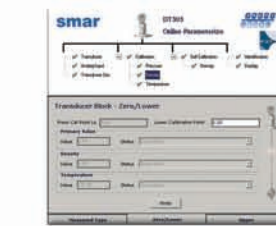
Features

- Multivendor device operation using DTMs: Regardless of the vendor of the individual components, the system enables parameter setting and calibration as well as the diagnostics of any field device.
- DTM catalogue management
- Tracking of user changes
- Configuration reconciliation
- On-line condition monitoring
- For HART, Foundation Fieldbus and Profibus

DFI302
HSE Controller
and Gateway



DT300 Series
Density Transmitter



LD400 Series
Pressure Transmitter



FY400 Series
Valve Positioner

