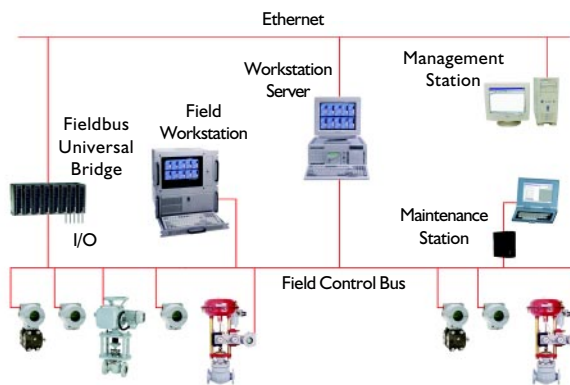


Smar Ole Server

Allows any Human Machine Interface (HMI) to access standard Fieldbus data using the standard interface OLE for Process Control (OPC).



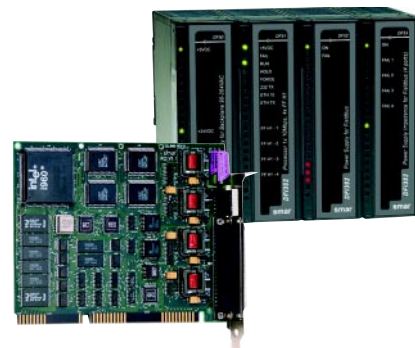
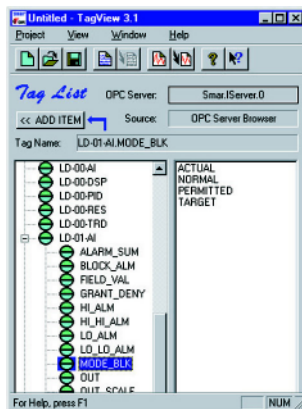
- All the Fieldbus interfaces supplied by Smar include its respective OLE Server, which provides connections with one or more HMI simultaneously.
- These Servers provide also Fieldbus configuration using OLE interfaces so, all the supervision and configuration steps could be done across a network environment using Microsoft DCOM.



- This open architecture provides flexibility for systems of all sizes.
- [Smar OLE Server](#) implements the most efficient way to exchange data between the Fieldbus network and HMI.
- All the parameters in the Fieldbus (including the status) are available just using browse interface.

The whole family of [Smar OLE Servers](#) support interface cards ISA, Universal Serial Bus (USB) and Ethernet Devices.

OPC browse provides to the system a single integrated database.



A typical architecture using Smar PCI OLE Server connects 1 to 8 PCI cards installed in the same server machine and handles till 4 Fieldbus H1 networks by card.

