

FY301DTM - Device Type Manager

The screenshot displays the smar FY300 Series Device Type Manager interface. At the top, it features the smar logo and the text "FY300 Series 4 to 20 mA + Hart Valve Positioner". The interface is divided into several sections:

- Navigation Tree (Left):** A tree view showing the software structure:
 - OnLine Parameterize (selected)
 - Blocks
 - Identification
 - Device
 - Additional
 - Configuration
 - Table
 - Calibration
 - Setup
 - Advanced Setup
 - Methods
 - General
 - Multidrop
 - OffLine Parameterize
 - Observe
 - Diagnosis
- Device Image (Center):** A 3D rendering of the FY301DTM valve positioner.
- Parameter Fields (Right):** A form for configuring device parameters:
 - Tag: FY301
 - Descriptor: DESCRIPTOR
 - Message: TRES
 - Device ID: 23902
- Footer:** A "Write" button and a "Connected" status indicator.





Specifications and information are subject to change without notice.
Up-to-date address information is available on our website.

web: www.smar.com/contactus.asp

INTRODUCTION

FY301DTM is from the family of Smar's DTMs HART. With FY301DTM is possible to have access to many functionalities of FY301 positioner:

- ✓ Positioner Identification and Manufacturing Data.
- ✓ Pressure Trim.
- ✓ Current Trim.
- ✓ Table.
- ✓ Valve Automatic Setup.
- ✓ Diagnostic.
- ✓ Equipment Configuration.
- ✓ Equipment Maintenance.

For further details about topics above, refer to the FY301 manual.

TABLE OF CONTENTS

| | |
|--------------------------|----------|
| FY301DTM..... | 7 |
| Pre - Requirements | 7 |
| Installation | 7 |
| Topology..... | 7 |
| Layout..... | 8 |
| Communication | 8 |
| Response Code..... | 9 |
| FY301DTM Functions..... | 9 |

FY301DTM

Pre - Requirements

The user needs to be familiar with the use of frame application FDT (Field Device Tool).

Installation

To do the FY301DTM Installation and all Smar’s DTMs, run **setup.exe** from CD “**Smar Device Library**”. After ending the CD-ROM installation, get into DTMs catalog from frame application to update DTMs list.

The download of installation package of Smar’s DTMs can be done at <http://www.smar.com/support.asp>. The user has to do a login at site.

FY301DTM could be integrated in all frame applications in compliance with the version 1.2 of the FDT/DTM standard.

Topology

After FY301DTM is installed and included at DTMs frame application catalog, a DTMs topology must be mounted (representing the devices physical topology).

On top must be inserted the communication DTM (responsible for communication between the computer and the first element from physical topology). The FY301DTM is the last element of topology (represents the FY301).

In many cases, is necessary a DTM gateway type (responsible for communication protocol conversion). The FY301DTM could be used with Communication DTM and Gateway DTM from other manufacturers, if they comply with the FDT 1.2 standard.

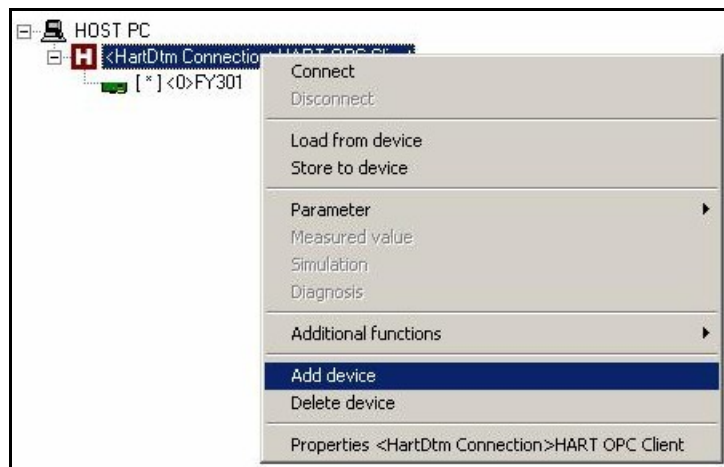


Figure 1 – “Add Device” Screen

Before changing FY301DTM to online, verify in the topology, if the address set in FY301DTM is the same of the FY301 device address. If it is not, change to the correct address through the communication DTM.

While the FY301DTM is offline (not connected), only the option **Offline Parameterize** will be enabled. After connected, will be possible to have online access to many functionalities of FY301:

- Online Parameterize
- Observe
- Diagnosis

Layout

The DTMs from Smar follow a standard layout. The parameters are distributed in many screens according to its functionality. The screens can be accessed by clicking the DTM options. Every time you click an option, all the screen parameters relative to the selected option will be read from the device.

Each DTM screen with parameters that can be written has a **Write** button. When any parameter is modified, the relative field will change its color. After writing, the DTM realizes the reading of the changed parameters and updates the screen.

In the figure below, the FY301DTM Online Parameterization navigation tree can be seen. The other options also appear.

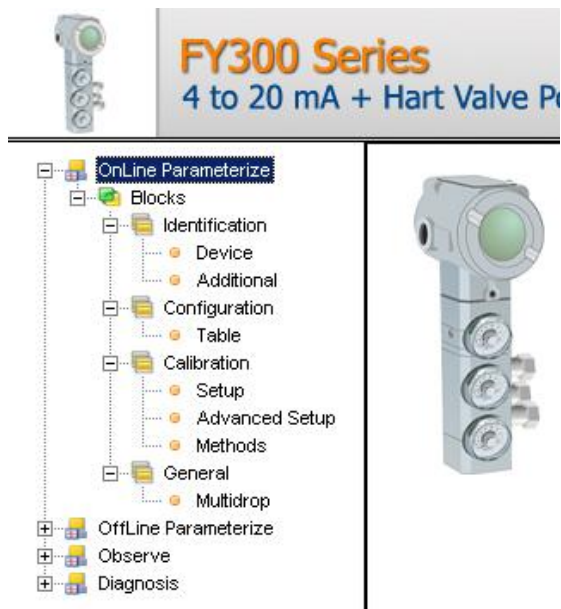



Figure 2 – FY301DTM navigation tree

In the window's bottom part the user has access to navigation buttons . They allow go to home page, back to previous page or go to next page, respectively.

The communication status can be verified - connected or disconnected:



FY301 Version

In case FY301's version is previous than version 2.12, possibly some parameter is not implemented. When attempting to write at this parameter, the following message will appear: "Command is not supported by the device".

Communication

FY301DTM sends the #0 command at each 4 seconds and in case FY301 does not answer after 2 tries, the following message will appear: "Communication error detected. No response from device." In this case, verify if any connection is broken or if the device is off.

Is not possible read / write any parameter in case the connected equipment is not FY301, not even the Universal Commands and Common Practice of HART protocol.

Response Code

When some writing or reading fail occurs, the FY301DTM displays a message coming from Response Code sent by FY301.

FY301DTM Functions

Below we have a brief description about each FY301DTM function.

1. **Online Parameterize** – This function is used to make the FY301 online parameterization, is enabled when the FY301DTM is online. The user access level for this function is “Operator” (read only) and “Maintenance” (complete access).

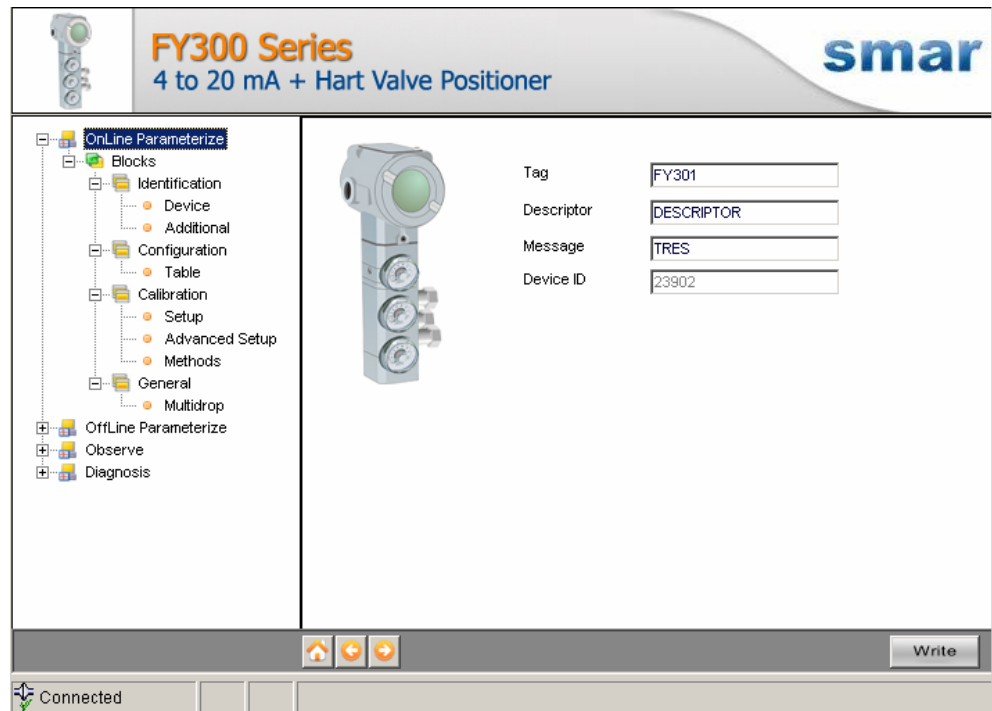


Figure 3 – FY301DTM “Online Parameterize” Screen

2. **Offline Parameterize** - This function is used to make the FY301 offline parameterization, the parameter values configured in this function can be written in FY301 through the **Download** function. The user access level for this function is “Maintenance”.

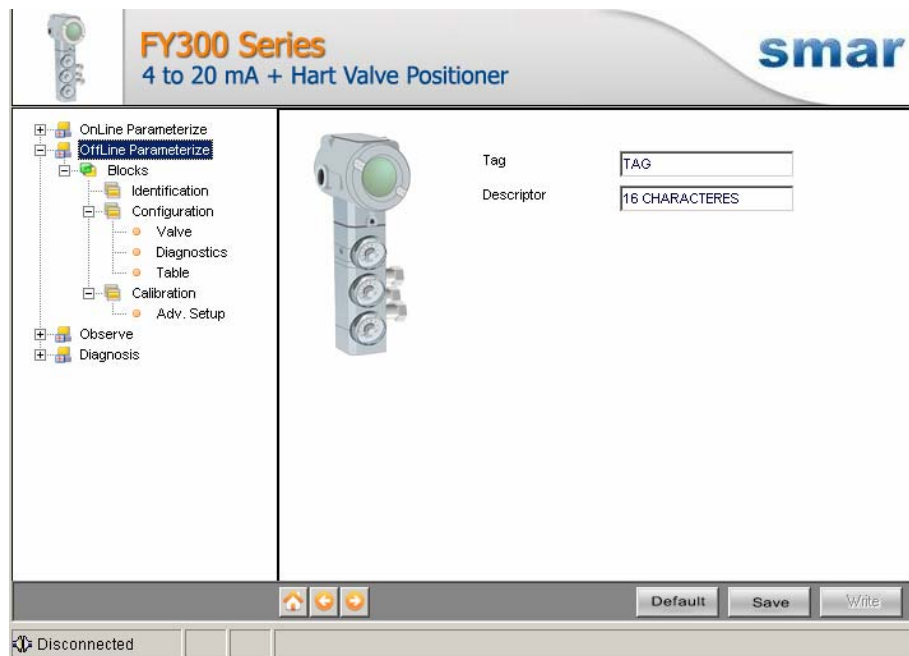


Figure 4 – FY301DTM “Offline Parameterize” Screen

3. **Observe** – Through this function is possible to monitor the FY301 process variables: Input (mA), Input (%), PV (%), SP (%).

This function is enabled when the FY301DTM is online. The user access level for this function is “Operator”.

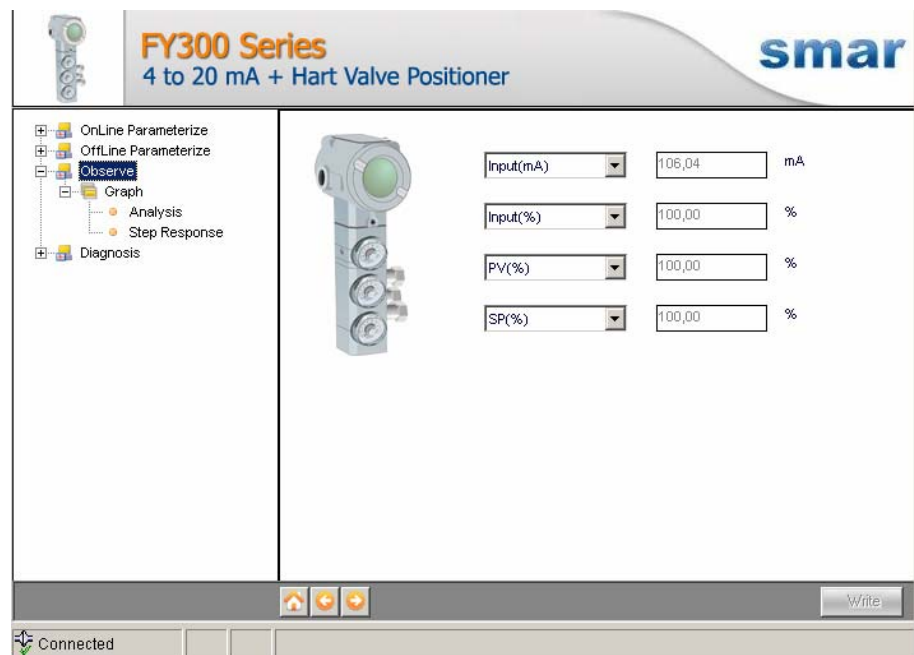


Figure 5 – FY301DTM “Observe” Screen

4. **Diagnosis** – Through this function the user has access to the FY301 diagnostic parameters. This function is enabled when the FY301DTM is online. The user access level for this function is “Operator”.

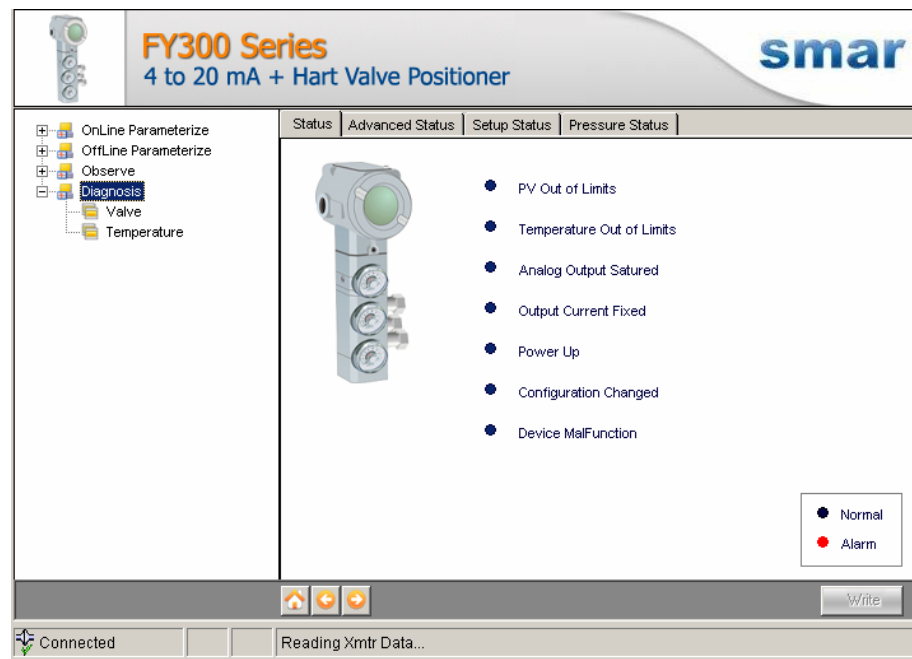


Figure 6 – FY301DTM “Diagnosis” Screen

5. **Upload** - This function reads the FY301 parameters and updates the FY301DTM database with the recent values. This function is enabled when the FY301DTM is online. The user access level for this function is “Maintenance”.
6. **Download** - This function writes the parameters configured in the FY301 **Offline Parameterize** function. This function is enabled when the FY301DTM is online. The user access level for this function is “Maintenance”.

